

**Client: Peptora, LLC**  
 help@peptorapeptides.com  
 855-811-0112

 Sample received: **04/07/26**  
 Analysis conducted: **04/08/26**

Compound:	Tirzepatide	CAS:	2023788-19-2
Batch/Lot #:	BDT20031226	Formula:	C225H348N48O68
Appearance:	White lyophilized powder	Mol Wt:	4813 g/mol

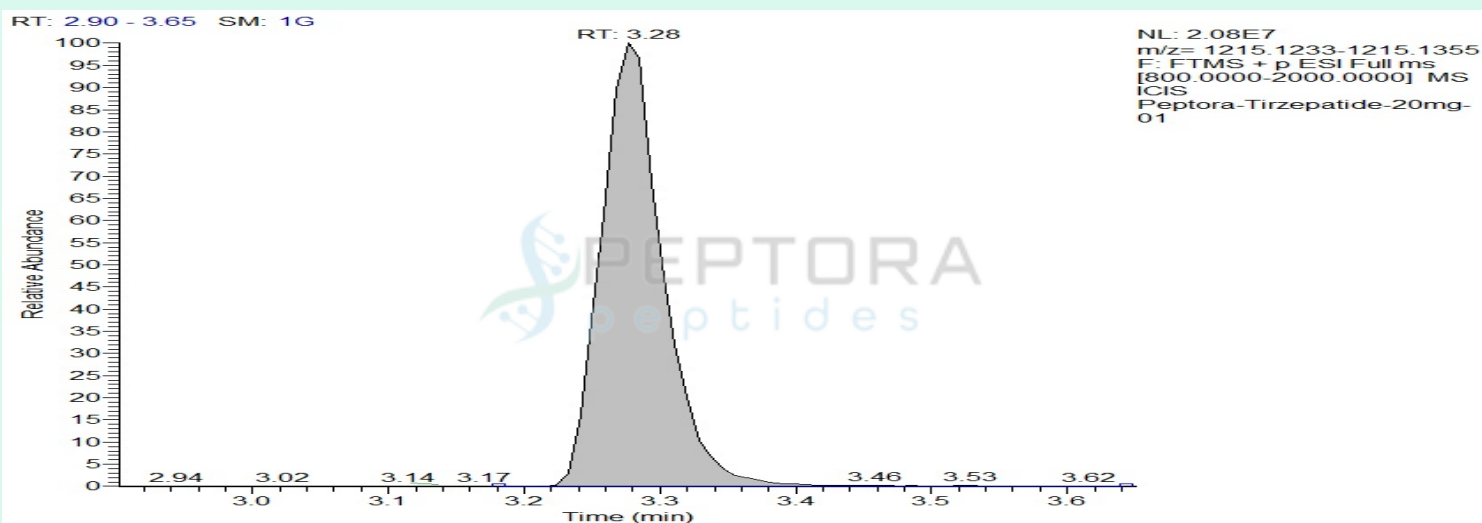
**Method:** Qualitative and Quantitative chemical analysis by Ultra High Performance Liquid Chromatography with Mass Spectrometry

**Pubchem CID:** 166567236

[Tirzepatide | C225H348N48O68 | CID 166567236 - PubChem](#)

	Specification	Result	
Identity Test:	Tirzepatide	<b>Tirzepatide</b>	<b>Conforms</b>
Quantity:	20 mg	20.71 mg	<b>Conforms</b>
Purity:	>99%	<b>99.42%</b>	<b>Conforms</b>

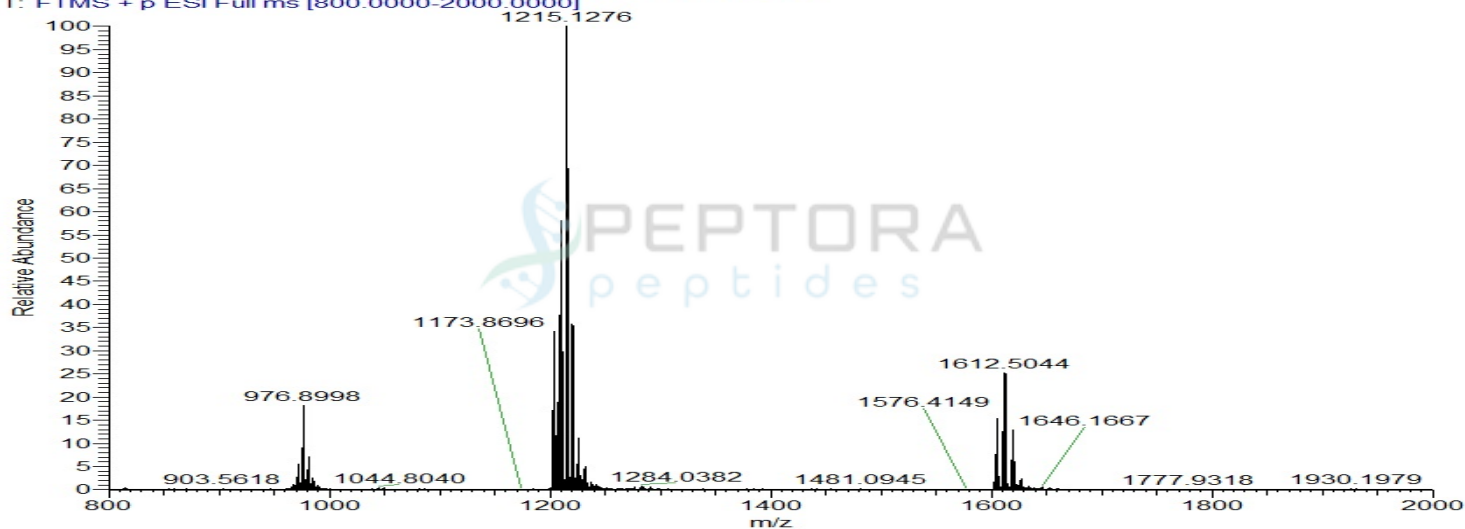
### LC-MS Chromatogram: Retention Time and Peak Analysis



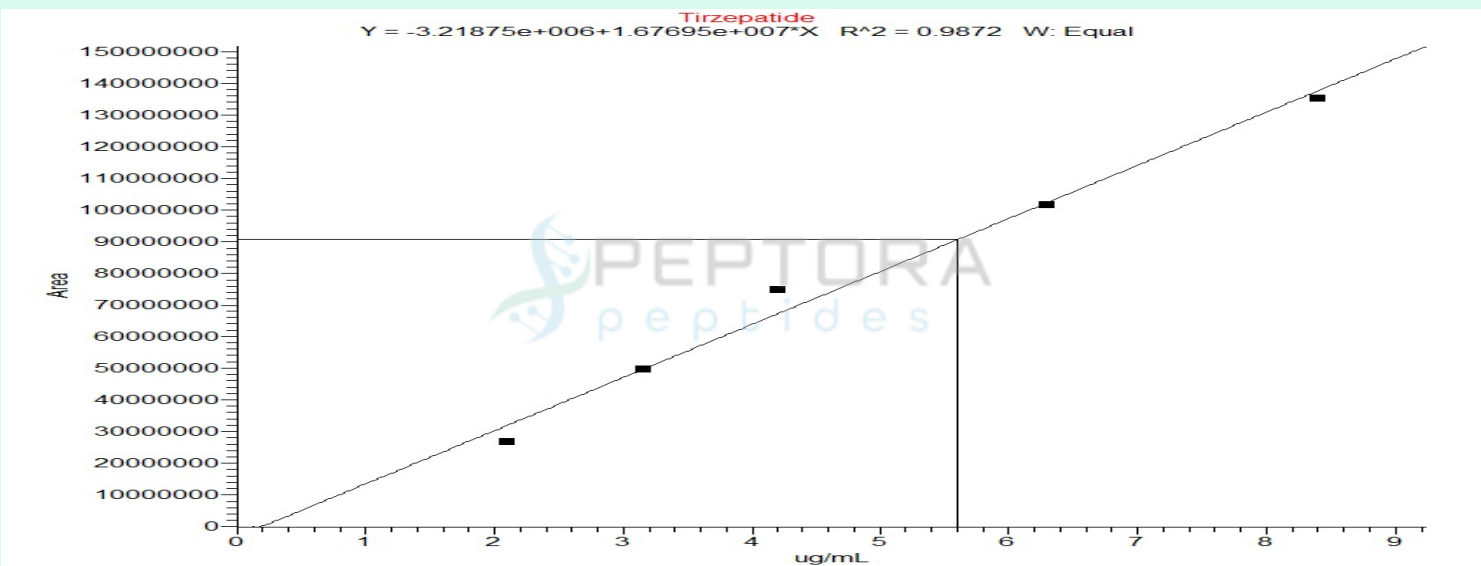
# Full Scan Mass Spectrometry Analysis

Peptora-Tirzepatide-20mg-01 #376 RT: 3.28 AV: 1 NL: 2.03E7

T: FTMS + p ESI Full ms [800.0000-2000.0000]



## Calibration Curve



### Analysis Performed by

Dr. Roberto Marin  
Analytical Chemist  
contact@bioregen.com

COA #12762  
Security Key **PEPTORA01**  
bioregen.com/verify

*Roberto Marin*

