

**Client: Peptora, LLC**  
 help@peptorapeptides.com  
 855-811-0112

 Sample received: **04/07/26**  
 Analysis conducted: **04/08/26**

<b>Compound:</b>	Tirzepatide	<b>CAS:</b>	2023788-19-2
<b>Batch/Lot #:</b>	BDT10031226	<b>Formula:</b>	C225H348N48O68
<b>Appearance:</b>	White lyophilized powder	<b>Mol Wt:</b>	4813 g/mol

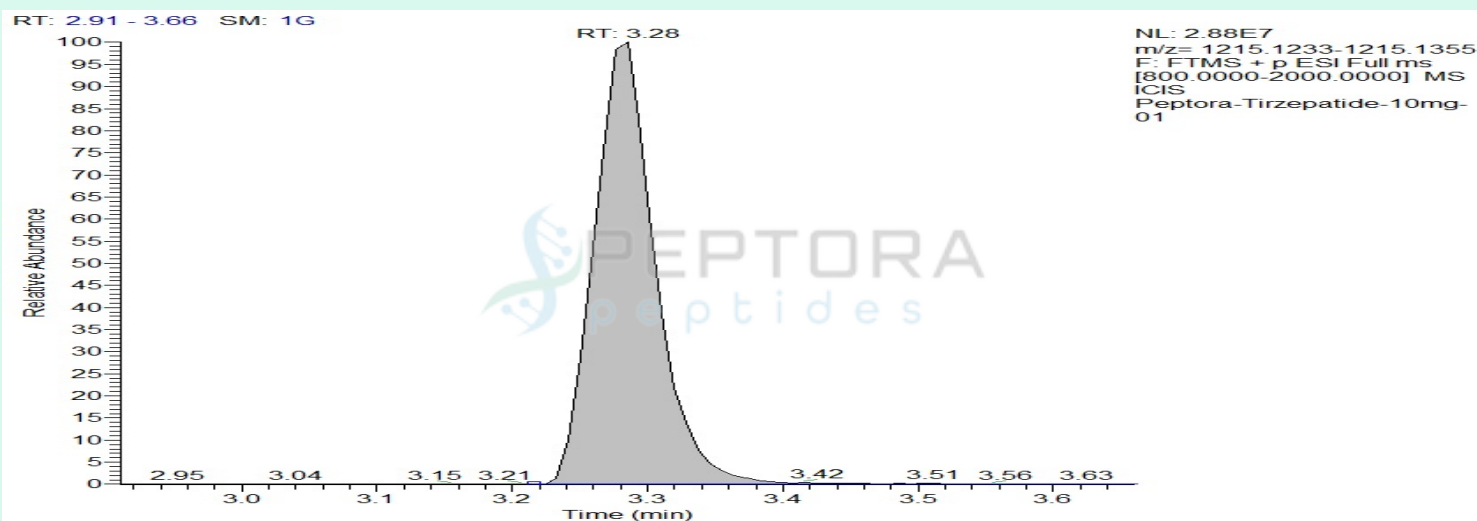
**Method:** Qualitative and Quantitative chemical analysis by Ultra High Performance Liquid Chromatography with Mass Spectrometry

**Pubchem CID:** 166567236

[Tirzepatide | C225H348N48O68 | CID 166567236 - PubChem](#)

	Specification	Result	
<b>Identity Test:</b>	Tirzepatide	<b>Tirzepatide</b>	<b>Conforms</b>
<b>Quantity:</b>	10 mg	11.2 mg	<b>Conforms</b>
<b>Purity:</b>	>99%	<b>99.50%</b>	<b>Conforms</b>

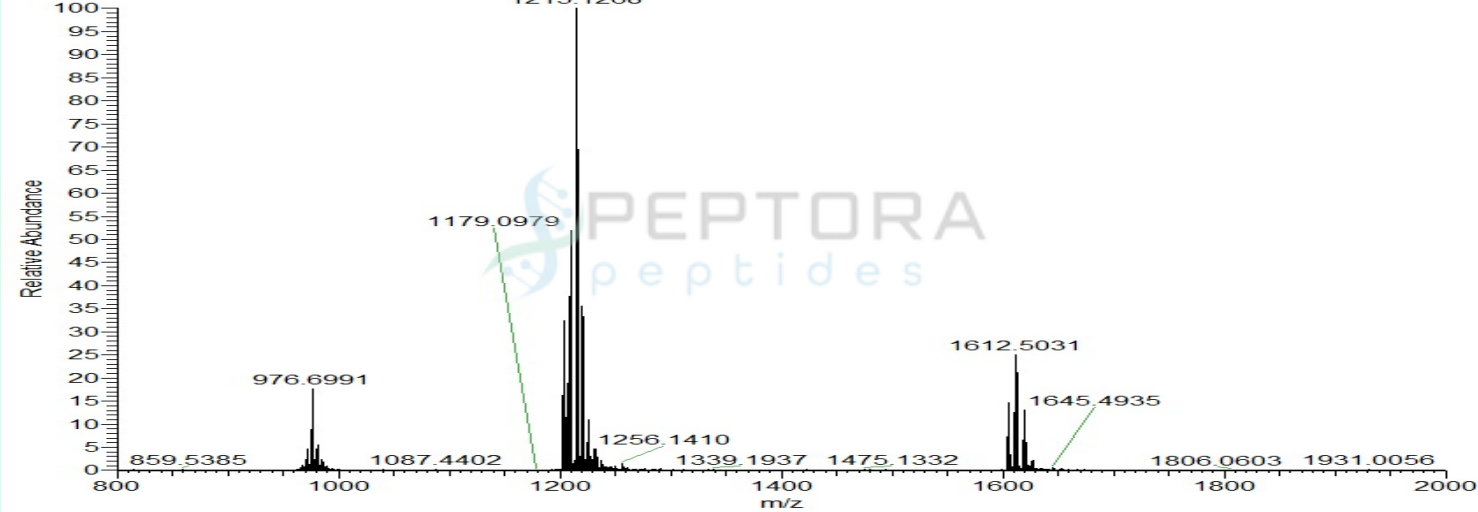
### LC-MS Chromatogram: Retention Time and Peak Analysis



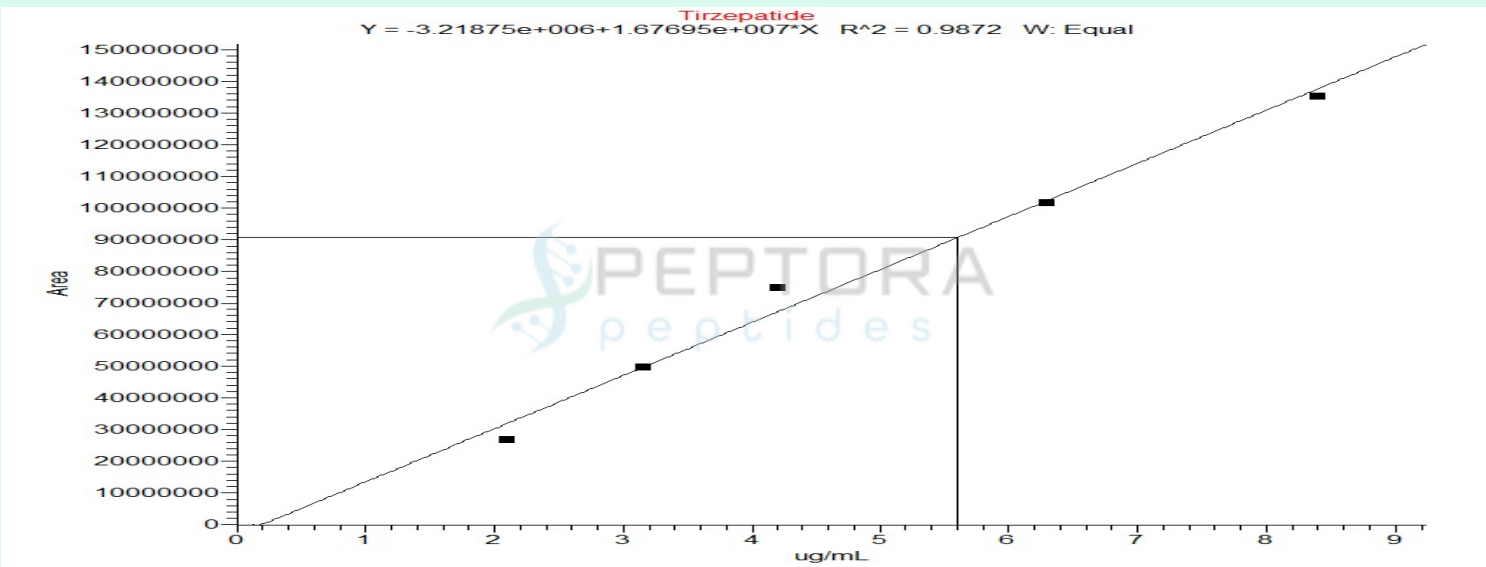
# Full Scan Mass Spectrometry Analysis

Peptora-Tirzepatide-10mg-01 #377 RT: 3.28 AV: 1 NL: 2.86E7

T: FTMS + p ESI Full ms [800.0000-2000.0000]



## Calibration Curve



**Analysis Performed by**  
Dr. Roberto Marin  
Analytical Chemist  
contact@bioregen.com

COA #12763  
Security Key **PEPTORA01**  
bioregen.com/verify

*Roberto Marin*

