

Client: Peptora, LLC
 help@peptorapeptides.com
 855-811-0112

 Sample received: **03/30/26**
 Analysis conducted: **04/02/26**

Compound:	Tesamorelin	CAS:	218949-48-5
Batch/Lot #:	INTSM10031226	Formula:	C221H366N72O67S
Appearance:	White lyophilized powder	Mol Wt:	5135.89 g/mol

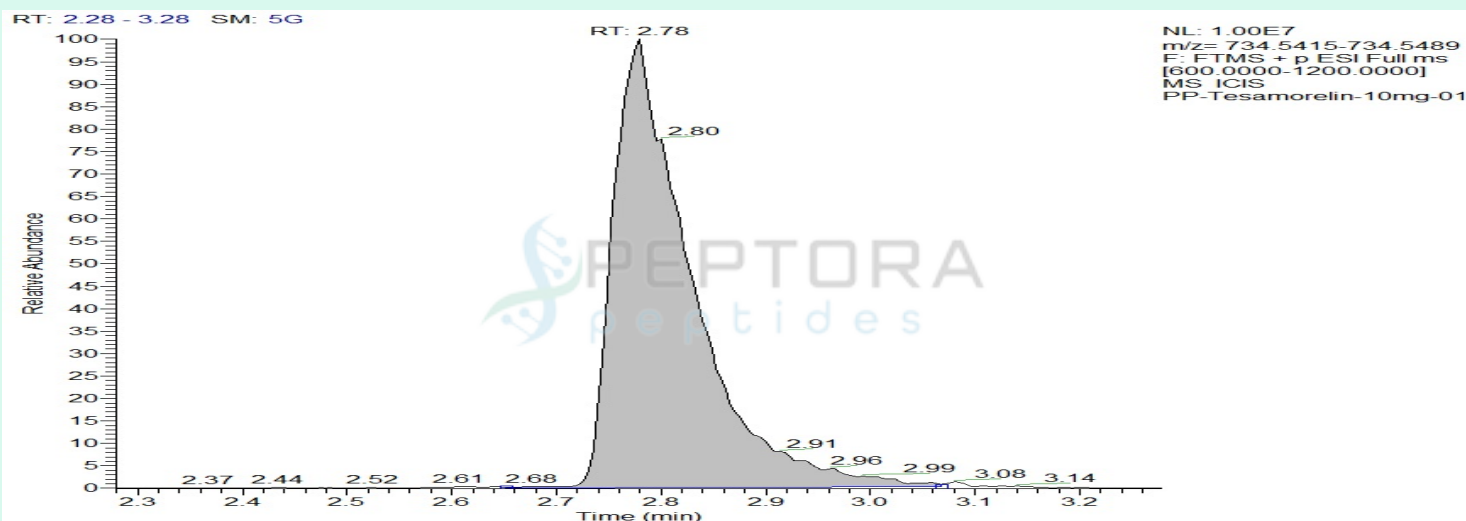
Method: Qualitative and Quantitative chemical analysis by Ultra High Performance Liquid Chromatography with Mass Spectrometry

Pubchem CID: 16137828

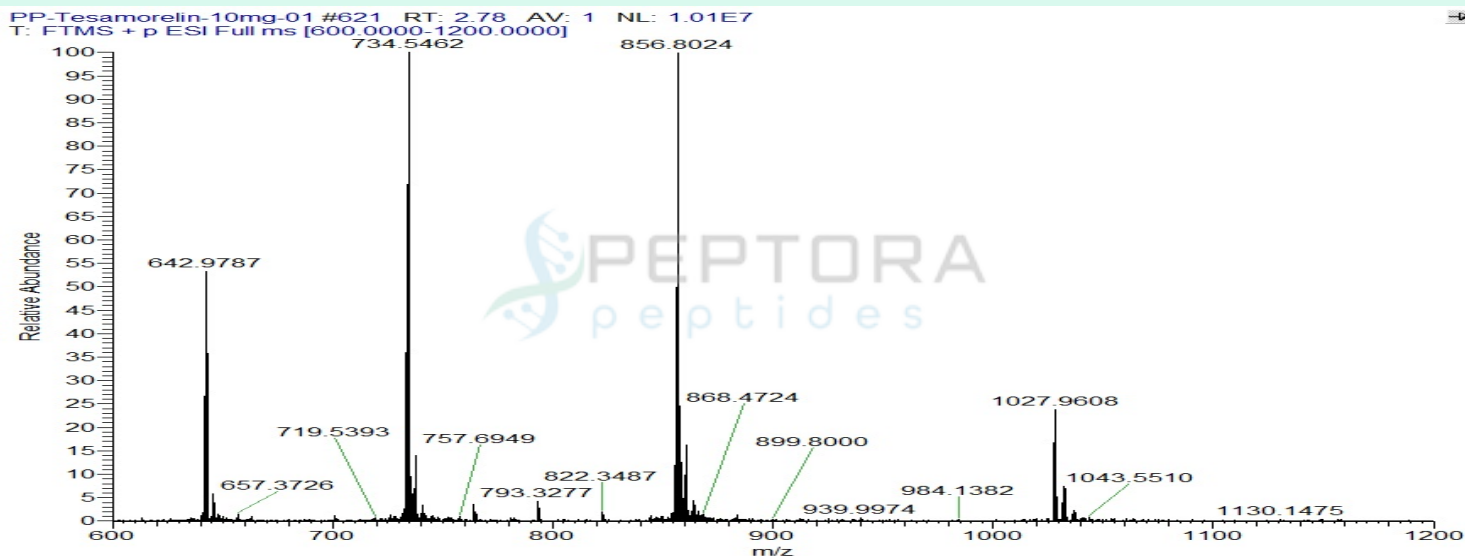
Tesamorelin |C221H366N72O67S |16137828

	Specification	Result	
Identity Test:	Tesamorelin	Tesamorelin	Conforms
Quantity:	10 mg	9.87 mg	Conforms
Purity:	>99%	99.52%	Conforms

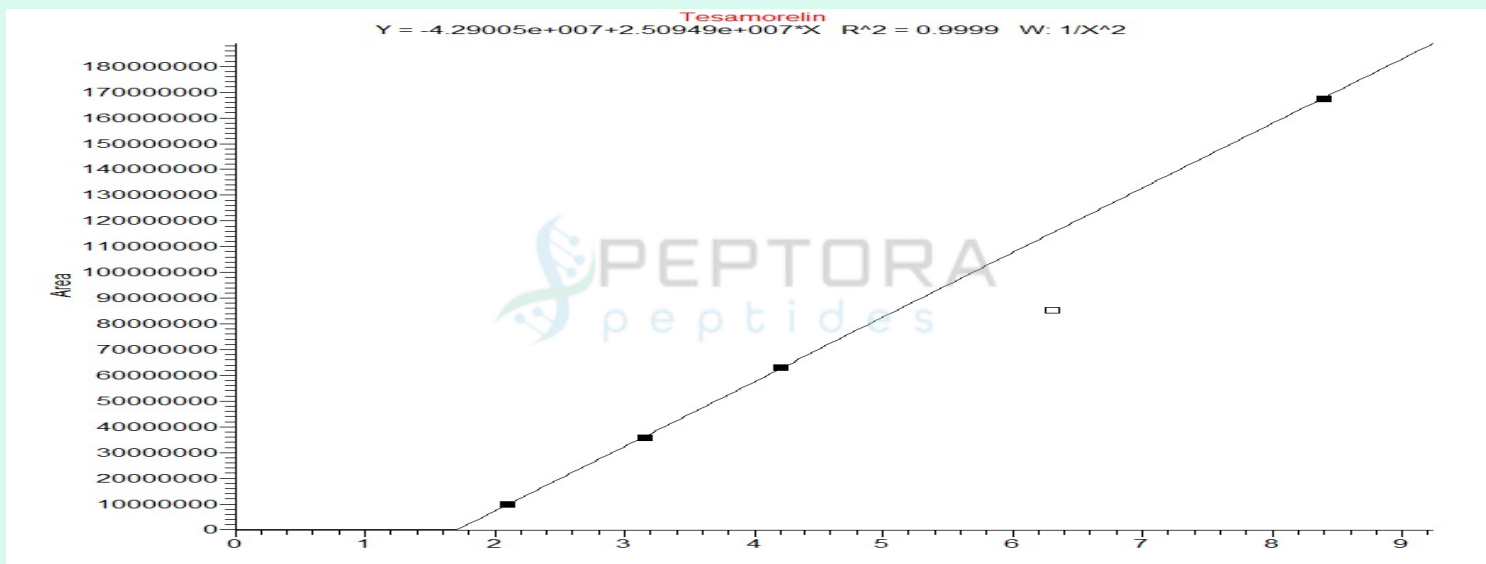
LC-MS Chromatogram and Retention Time Analysis



Full Scan Mass Spectrometry Analysis



Calibration Curve



Analysis Performed by
Dr. Victor Ugur
Analytical Chemist
contact@bioregen.com

COA #12697
Security Key **PEPTORA01**
bioregen.com/verify



Victor Ugur

Limulus Amebocyte Lysate (LAL) – Report of Analysis

Test Performed	Endosafe - PTS LAL Assay
Test Date	04/02/2026
Analyst	VICTOR
Instrument	Endosafe® nexgen-PTS™ (SN: 25201216)

Sample Information

Company Name	Peptora, LLC
Sample Tested	Tesamorelin
Sample Lot Number	INTSM10031226
Sample Concentration	10mg
Vials/Units Received	1

Reagent Information

Cartridge Type	Endotoxin- LAL (Charles River)
Cartridge Lot #	2601241225
Cartridge Calibration Code	511840156587
Detection Range	0.05 EU/mL – 5.0 EU/mL
Spike Value	1.03 EU/mL
Spike Recovery	121% (Pass)
Test Suitability	Pass

Endotoxin Quantitation Results

Sample ID	Replicates	Measured EU/mL	Specification	Pass/Fail
Tesamorelin	1, 2	<0.05 EU/mL	≤ 0.50 EU/mL	Pass

Interpretation:

Endotoxin level in **Tesamorelin** was measured using chromogenic LAL assay with detection at 405 nm. The result of **<0.05 EU/mL** indicates that the endotoxin content is **below** the acceptable threshold of 0.5 EU/mL. Sample **PASSES** the endotoxin limit test.



Analyst Signature: _____

Date: 04/03/2026

To verify the authenticity of this report, please contact **BioRegen** at contact@bioregen.com or reference the **Report ID** and **Validation Key** provided above.

Alternatively, **scan the QR code** below to access the official record on our website.

