

Client: Peptora, LLC
 help@peptorapeptides.com
 855-811-0112

 Sample received: **03/30/26**
 Analysis conducted: **04/14/26**

Compound:	Retatrutide	CAS:	2381089-83-2
Batch/Lot #:	ZLR40031226	Formula:	C221H342N46O68
Appearance:	White lyophilized powder	Mol Wt:	4845.444 g/mol

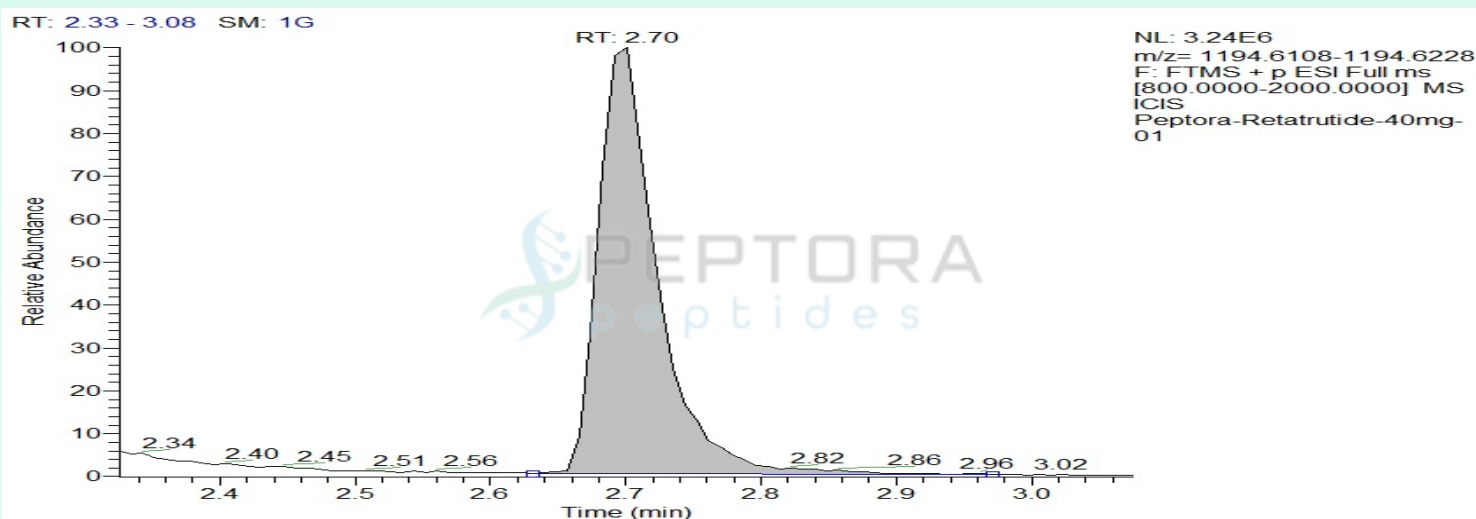
Method: Qualitative and Quantitative chemical analysis by Ultra High Performance Liquid Chromatography with Mass Spectrometry

Pubchem CID: 171390338

Retatrutide | C221H342N46O68 | Pubchem CID 171390338

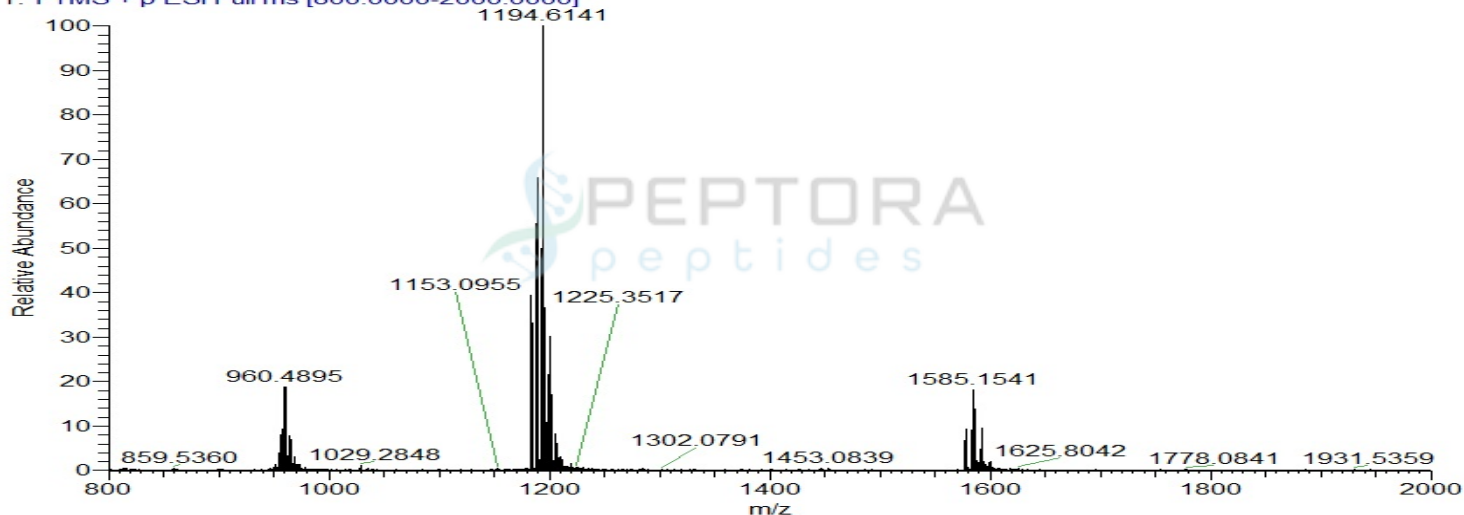
	Specification	Result	
Identity Test:	Retatrutide	Retatrutide	Conforms
Quantity:	40 mg	41.9 mg	Conforms
Purity:	>99%	99.72%	Conforms

LC-MS Chromatogram: Retention Time and Peak Analysis

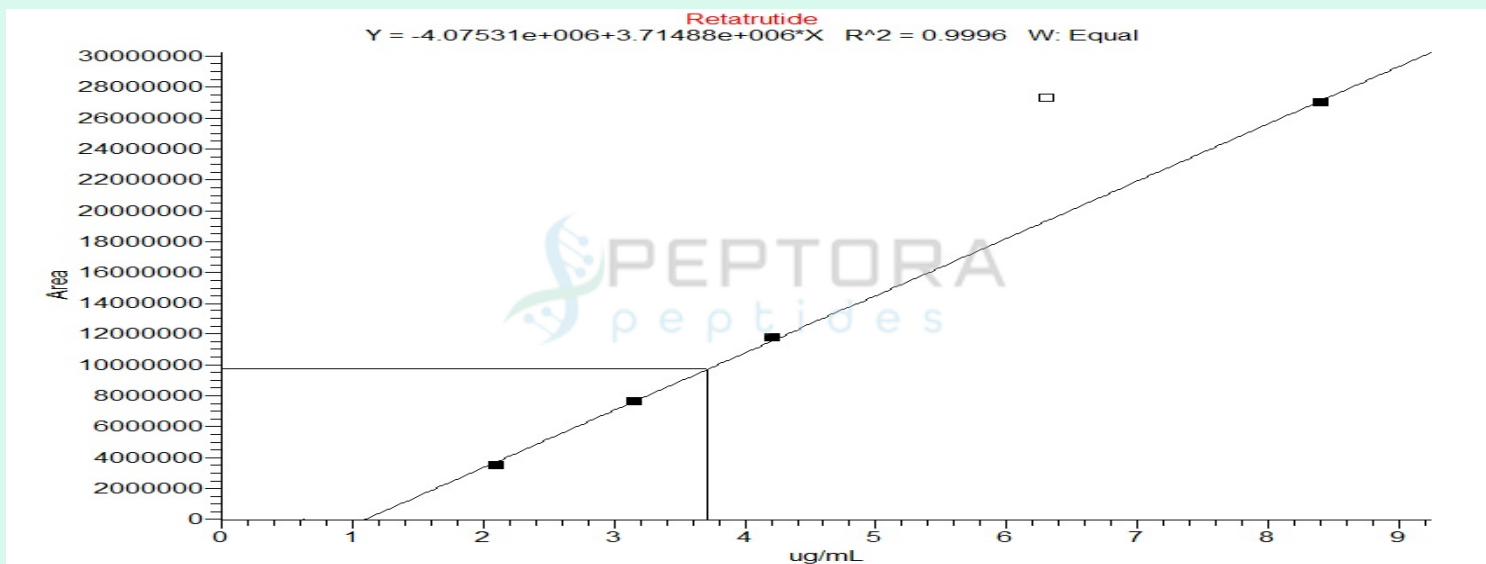


Full Scan Mass Spectrometry Analysis

Peptora-Retatrutide-40mg-01 #310 RT: 2.70 AV: 1 NL: 3.21E6
T: FTMS + p ESI Full ms [800.0000-2000.0000]



Calibration Curve



Analysis Performed by

Dr. Roberto Marin
Analytical Chemist
contact@bioregen.com

COA #12815
Security Key **PEPTORA01**
bioregen.com/verify



Roberto Marin

Limulus Amebocyte Lysate (LAL) – Report of Analysis

Test Performed	Endosafe - PTS LAL Assay
Test Date	04/09/2026
Analyst	VICTOR
Instrument	Endosafe® nexgen-PTS™ (SN: 25201216)

Sample Information

Company Name	Peptora, LLC
Sample Tested	Retatrutide
Sample Lot Number	ZLR40031226
Sample Concentration	40mg
Vials/Units Received	1

Reagent Information

Cartridge Type	Endotoxin- LAL (Charles River)
Cartridge Lot #	2602741388
Cartridge Calibration Code	518334799106
Detection Range	0.05 EU/mL – 5.0 EU/mL
Spike Value	1.03 EU/mL
Spike Recovery	93% (Pass)
Test Suitability	Pass

Endotoxin Quantitation Results

Sample ID	Replicates	Measured EU/mL	Specification	Pass/Fail
Retatrutide	1, 2	<0.05 EU/mL	≤ 0.50 EU/mL	Pass

Interpretation:

Endotoxin level in **Retatrutide** was measured using chromogenic LAL assay with detection at 405 nm. The result of **<0.05 EU/mL** indicates that the endotoxin content is **below** the acceptable threshold of 0.5 EU/mL. Sample **PASSES** the endotoxin limit test.



Analyst Signature: _____

Date: 04/09/2026

To verify the authenticity of this report, please contact **BioRegen** at contact@bioregen.com or reference the **Report ID** and **Validation Key** provided above.

Alternatively, scan the QR code below to access the official record on our website.

