

Client: Peptora, LLC
 help@peptorapeptides.com
 855-811-0112

 Sample received: **03/30/26**
 Analysis conducted: **04/08/26**

Compound:	MOTS-c	CAS:	1627580-64-6
Batch/Lot #:	INMS40031226	Formula:	C101H152N28O22S2
Appearance:	White lyophilized powder	Mol Wt:	2174.64 g/mol

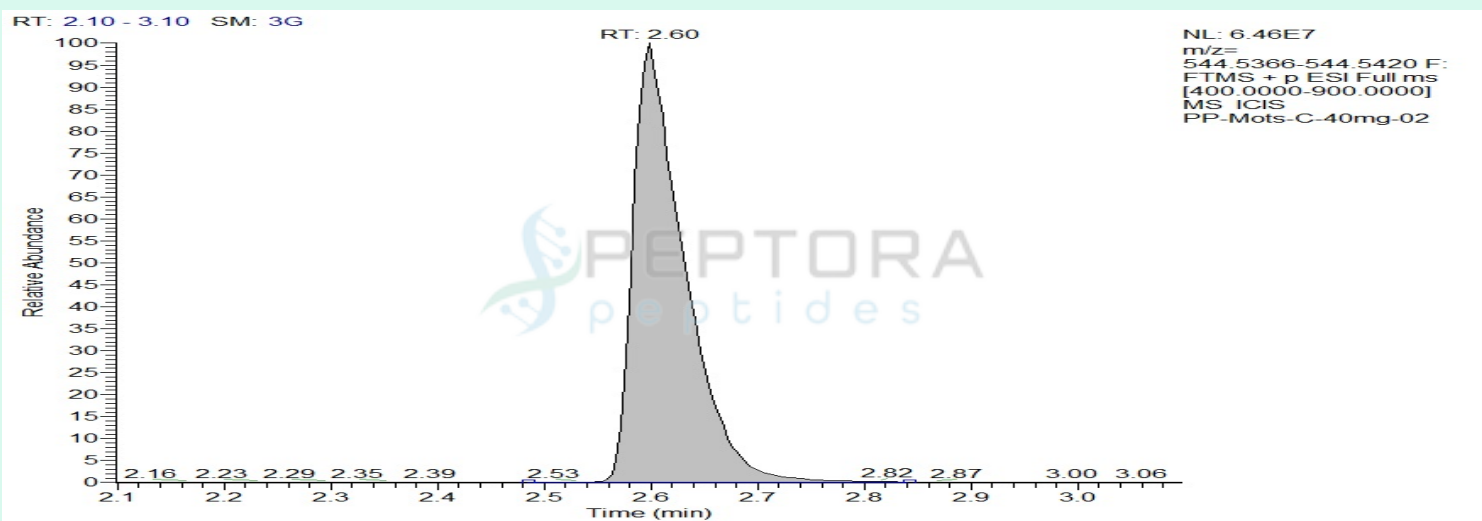
Method: Qualitative and Quantitative chemical analysis by Ultra High Performance Liquid Chromatography with Mass Spectrometry

Pubchem CID: 155885767

MOTS-c |C101H152N28O22S2| 155885767

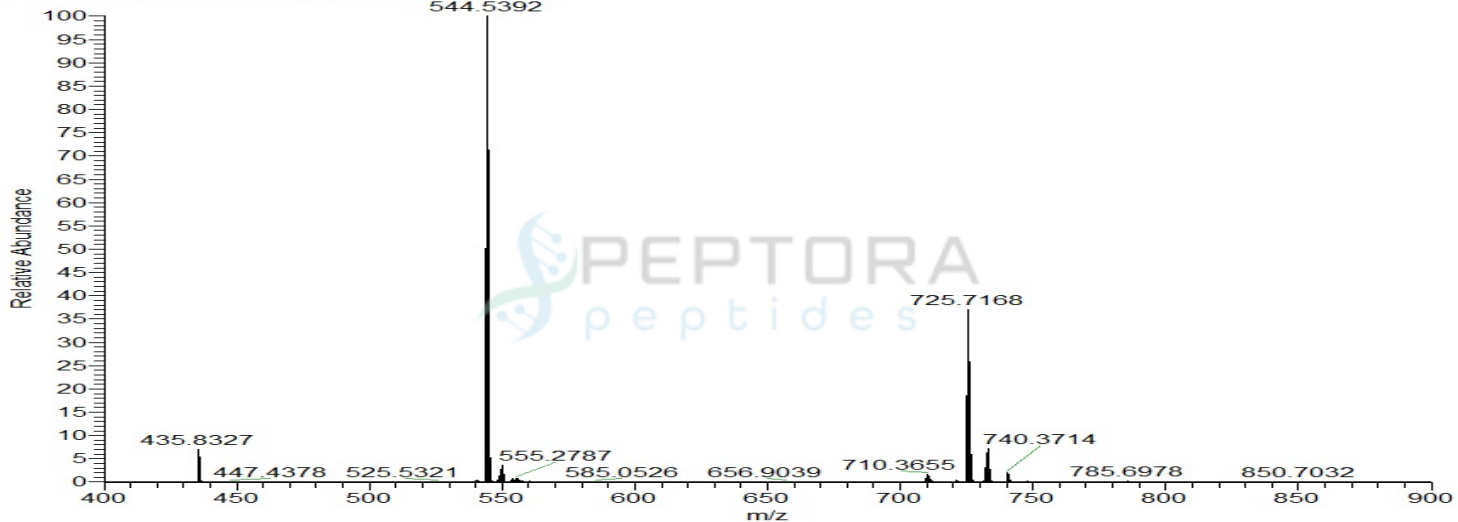
	Specification	Result	
Identity Test:	MOTS-c	MOTS-c	Conforms
Quantity:	40 mg	45.27 mg	Conforms
Purity:	99%	99.42%	Conforms

LC-MS Chromatogram and Retention Time Analysis

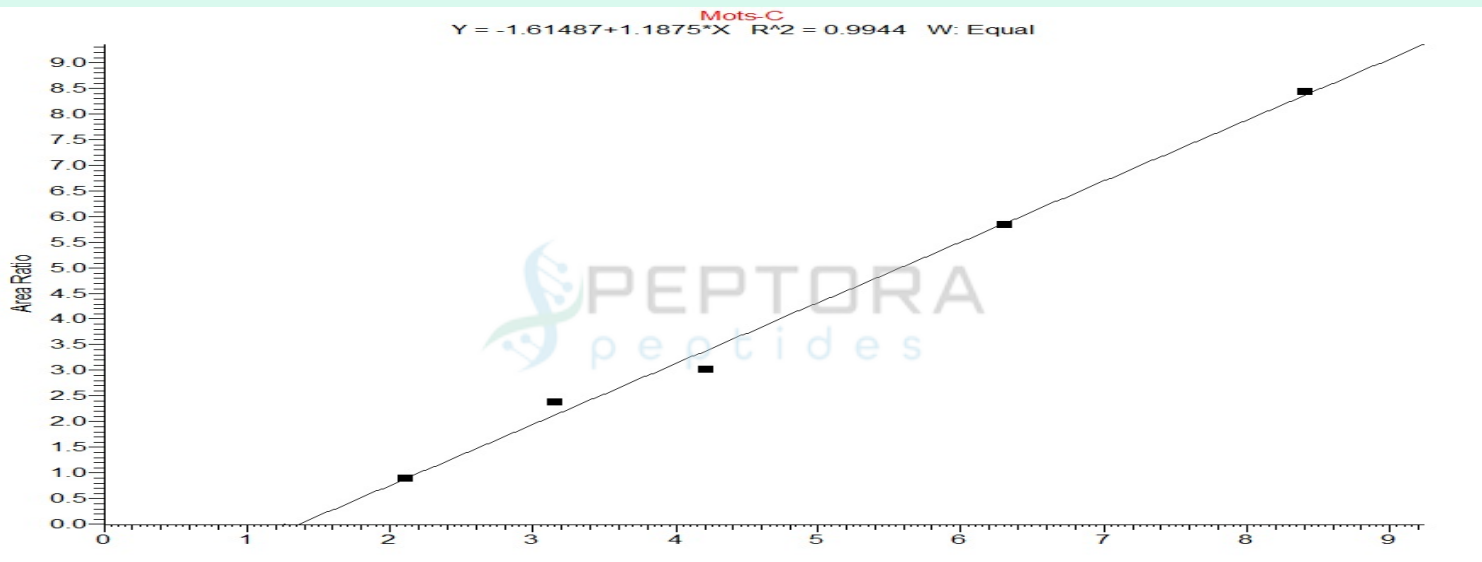


Full Scan Mass Spectrometry Analysis

PP-Mots-C-40mg-02 #547 RT: 2.60 AV: 1 NL: 6.49E7
T: FTMS + p ESI Full ms [400.0000-900.0000]



Calibration Curve



Analysis Performed by
Dr. Victor Ugur
Analytical Chemist
contact@bioregen.com

COA #12776
Security Key **PEPTORA01**
bioregen.com/verify



Victor Ugur

Limulus Amebocyte Lysate (LAL) – Report of Analysis

Test Performed	Endosafe - PTS LAL Assay
Test Date	04/08/2026
Analyst	VICTOR
Instrument	Endosafe® nexgen-PTS™ (SN: 25201216)

Sample Information

Company Name	Peptora, LLC
Sample Tested	MOTS-c
Sample Lot Number	INMS40031226
Sample Concentration	40mg
Vials/Units Received	1

Reagent Information

Cartridge Type	Endotoxin- LAL (Charles River)
Cartridge Lot #	2602741388
Cartridge Calibration Code	518334799106
Detection Range	0.05 EU/mL – 5.0 EU/mL
Spike Value	1.05 EU/mL
Spike Recovery	94% (Pass)
Test Suitability	Pass

Endotoxin Quantitation Results

Sample ID	Replicates	Measured EU/mL	Specification	Pass/Fail
MOTS-c	1, 2	<0.05 EU/mL	≤ 0.50 EU/mL	Pass

Interpretation:

Endotoxin level in **MOTS-c** was measured using chromogenic LAL assay with detection at 405 nm. The result of **<0.05 EU/mL** indicates that the endotoxin content is **below** the acceptable threshold of 0.5 EU/mL. Sample **PASSES** the endotoxin limit test.



Analyst Signature: _____

Date: 04/09/2026

To verify the authenticity of this report, please contact **BioRegen** at contact@bioregen.com or reference the **Report ID** and **Validation Key** provided above.

Alternatively, scan the QR code below to access the official record on our website.

