

Client: Peptora, LLC
 help@peptorapeptides.com
 855-811-0112

 Sample received: **03/16/26**
 Analysis conducted: **03/28/26**

Compound:	KPV	CAS:	67727-97-3
Batch/Lot #:	BDKPV031226	Formula:	C16H30N4O4
Appearance:	White lyophilized powder	Mol Wt:	342.43 g/mol

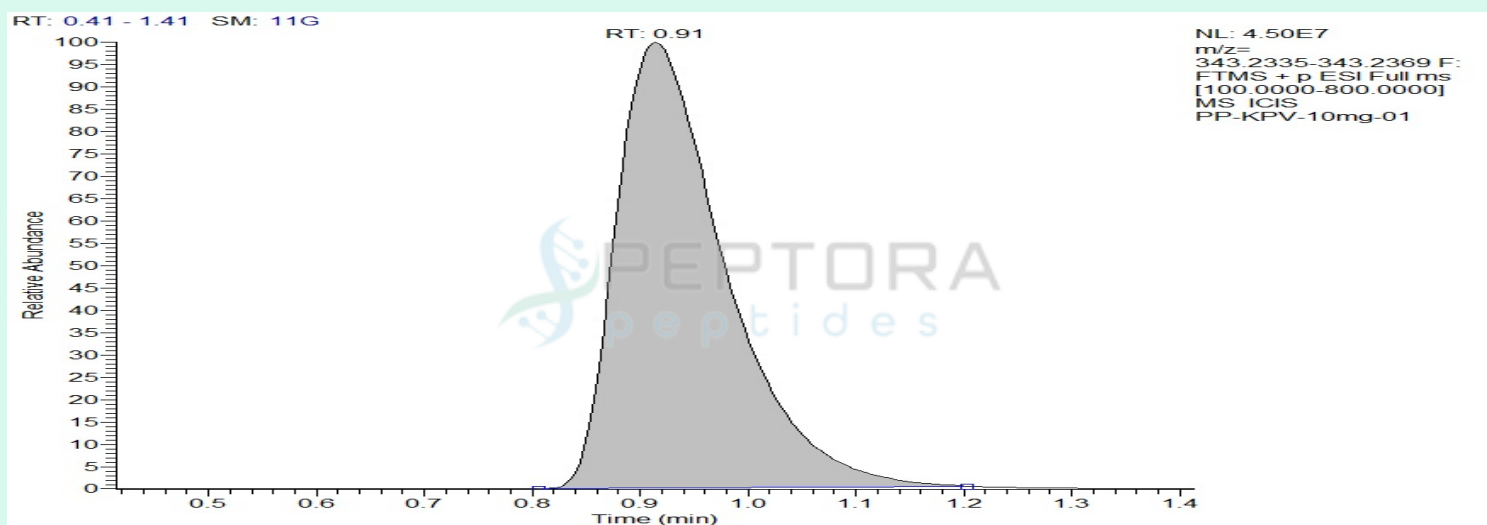
Method: Qualitative and Quantitative chemical analysis by Ultra High Performance Liquid Chromatography with Mass Spectrometry

Pubchem CID: 125672

[KPV |C16H30N4O4 |125672](#)

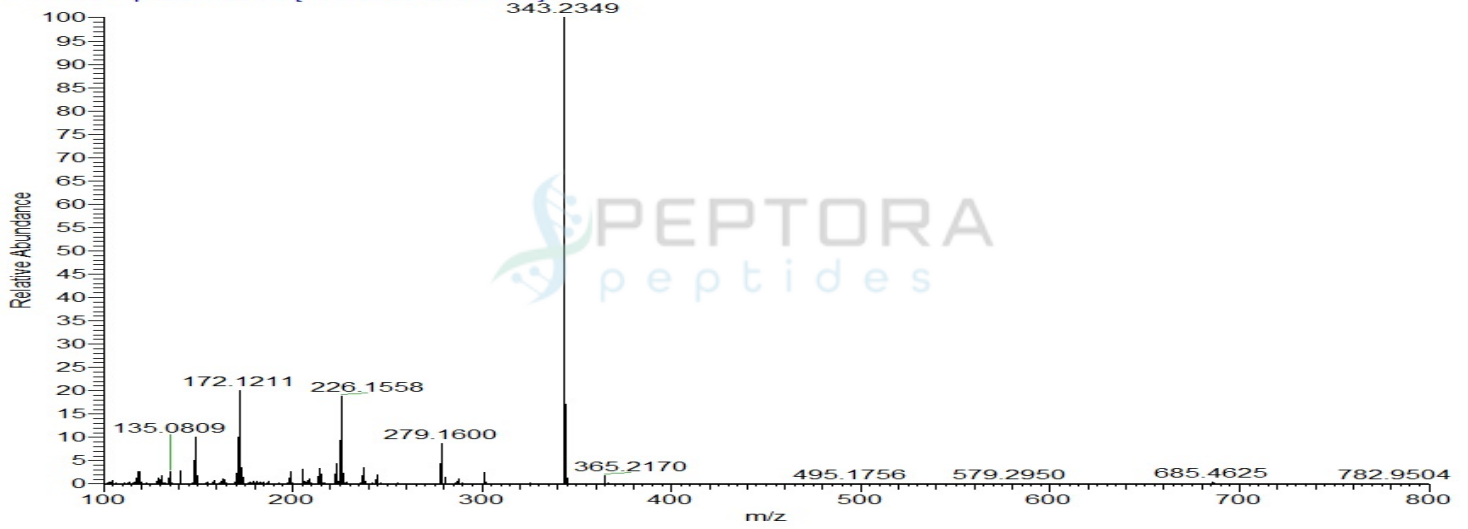
	Specification	Result	
Identity Test:	KPV	KPV	Conforms
Quantity:	10 mg	10.62 mg	Conforms
Purity:	>99%	99.45%	Conforms

LC-MS Chromatogram and Retention Time Analysis

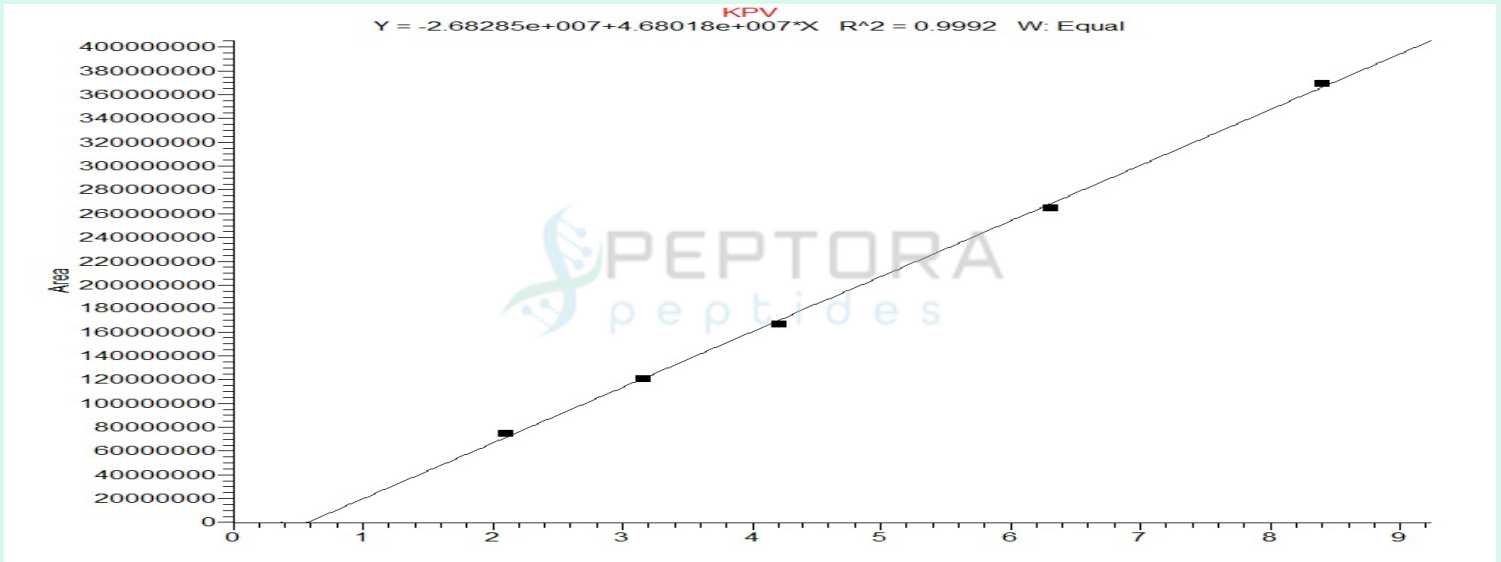


Full Scan Mass Spectrometry Analysis

PP-KPV-10mg-01 #210 RT: 0.91 AV: 1 NL: 4.52E7
T: FTMS + p ESI Full ms [100.0000-800.0000]



Calibration Curve



Analysis Performed by

Dr. Victor Ugur
Analytical Chemist
contact@bioregen.com

COA #12640
Security Key **PEPTORA01**
bioregen.com/verify



Victor Ugur

Limulus Amebocyte Lysate (LAL) – Report of Analysis

Test Performed	Endosafe - PTS LAL Assay
Test Date	04/08/2026
Analyst	VICTOR
Instrument	Endosafe® nexgen-PTS™ (SN: 25201216)

Sample Information

Company Name	Peptora, LLC
Sample Tested	KPV
Sample Lot Number	BDKPV031226
Sample Concentration	10mg
Vials/Units Received	1

Reagent Information

Cartridge Type	Endotoxin- LAL (Charles River)
Cartridge Lot #	2602741388
Cartridge Calibration Code	518334799106
Detection Range	0.05 EU/mL – 5.0 EU/mL
Spike Value	0.583 EU/mL
Spike Recovery	53% (Pass)
Test Suitability	Pass

Endotoxin Quantitation Results

Sample ID	Replicates	Measured EU/mL	Specification	Pass/Fail
KPV	1, 2	<0.05 EU/mL	≤ 0.50 EU/mL	Pass

Interpretation:

Endotoxin level in **KPV** was measured using chromogenic LAL assay with detection at 405 nm. The result of **<0.05 EU/mL** indicates that the endotoxin content is **below** the acceptable threshold of 0.5 EU/mL. Sample **PASSES** the endotoxin limit test.



Analyst Signature: _____

Date: 04/09/2026

To verify the authenticity of this report, please contact **BioRegen** at contact@bioregen.com or reference the **Report ID** and **Validation Key** provided above.

Alternatively, scan the QR code below to access the official record on our website.

