

Client: Peptora, LLC
 help@peptorapeptides.com
 855-811-0112

 Sample received: **03/30/26**
 Analysis conducted: **04/16/26**

Compound:	KLOW	CAS:	137525-51-0
Batch/Lot #:	CHKLW031226	Formula:	C62H98N16O22
Appearance:	White lyophilized powder	Mol Wt:	1419.5 g/mol

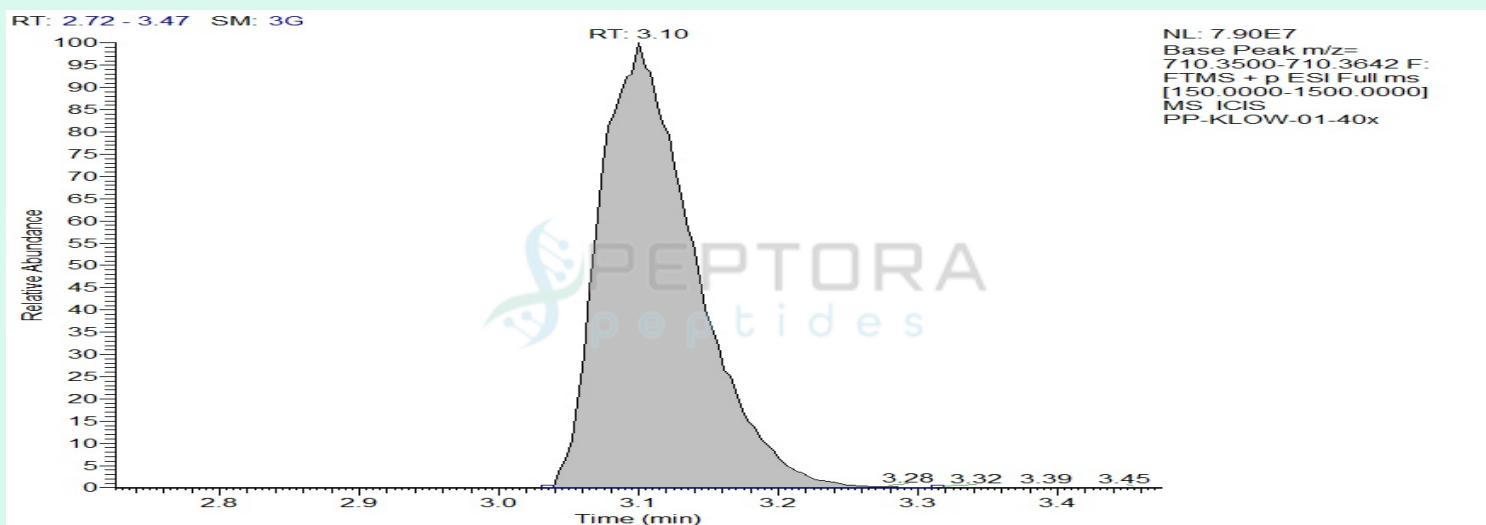
Method: Qualitative and Quantitative chemical analysis by Ultra High Performance Liquid Chromatography with Mass Spectrometry

Pubchem CID: 9941957

[BPC 157](#) | [C62H98N16O22](#) | [CID 9941957 - PubChem](#)

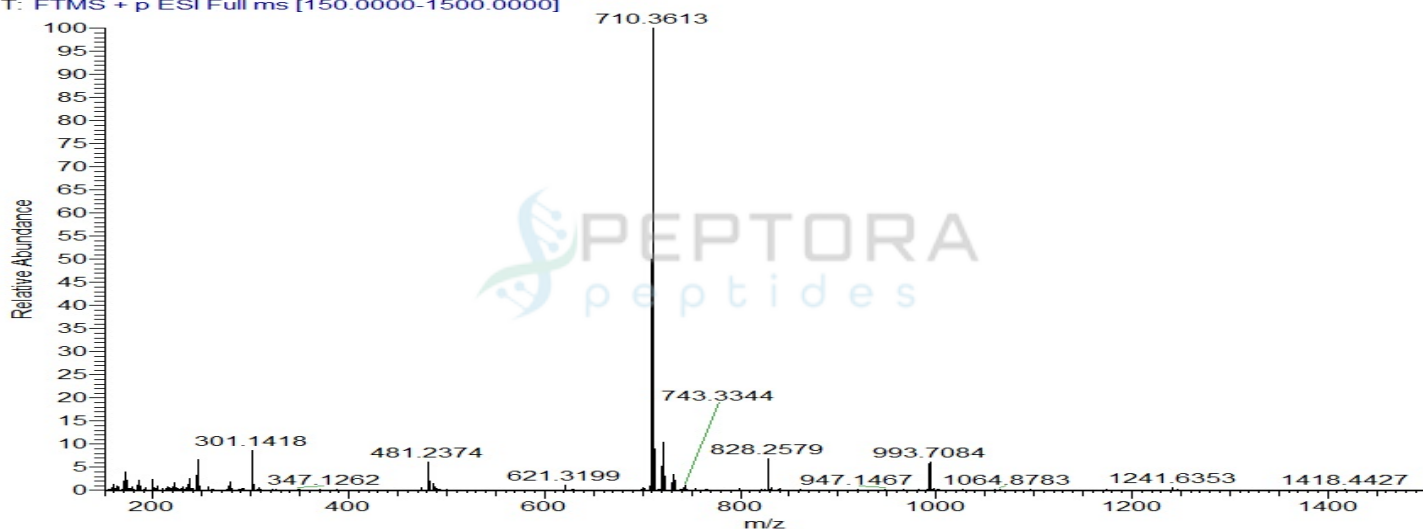
	Specification	Result	
Identity Test:	BPC 157	BPC 157	Conforms
Quantity:	10 mg	11.2 mg	Conforms
Purity:	>99%	99.62%	Conforms

LC-MS Chromatogram and Retention Time Analysis

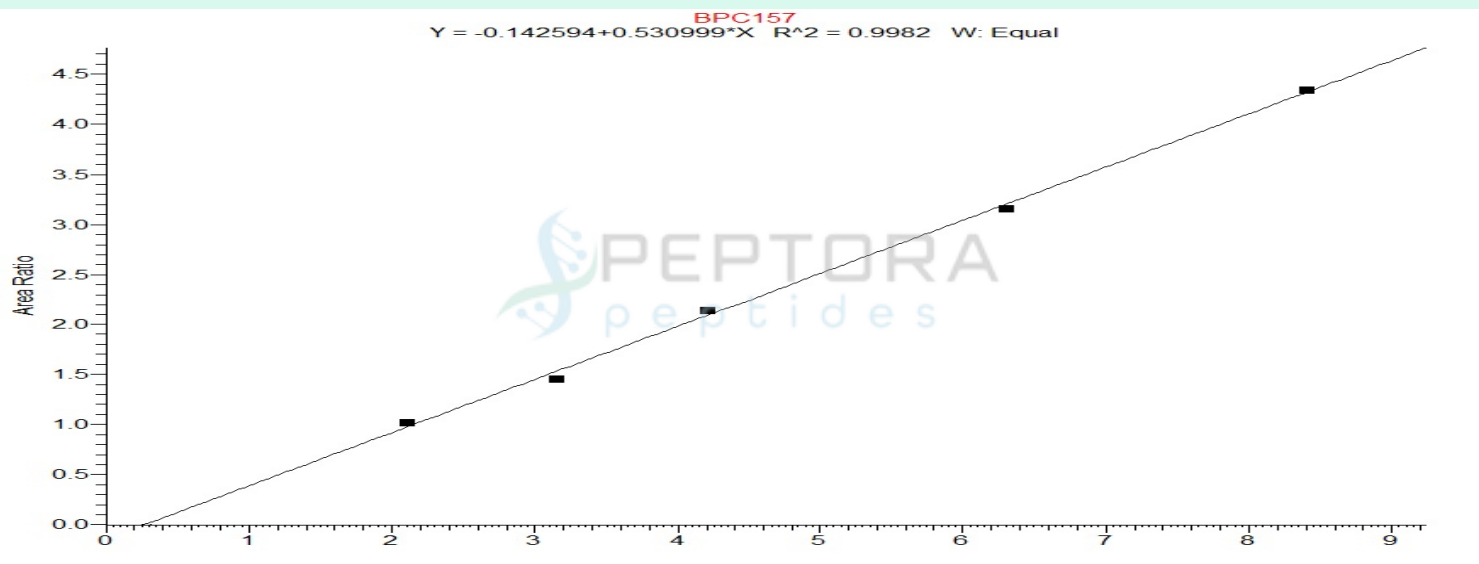


Full Scan Mass Spectrometry Analysis

PP-KLOW-01-40x #711 RT: 3.10 AV: 1 NL: 7.95E7
T: FTMS + p ESI Full ms [150.0000-1500.0000]



Calibration Curve



Analysis Performed by
Dr. Victor Ugur
Analytical Chemist
contact@bioregen.com

COA #12832
Security Key **PEPTORA01**
bioregen.com/verify



Victor Ugur

Client: Peptora, LLC
help@peptorapeptides.com
855-811-0112

Sample received: **03/30/26**
Analysis conducted: **04/16/26**

Compound:	KLOW	CAS:	885340-08-9
Batch/Lot #:	CHKLW031226	Formula:	C38H68N10O14
Appearance:	White lyophilized powder	Mol Wt:	889.0 g/mol

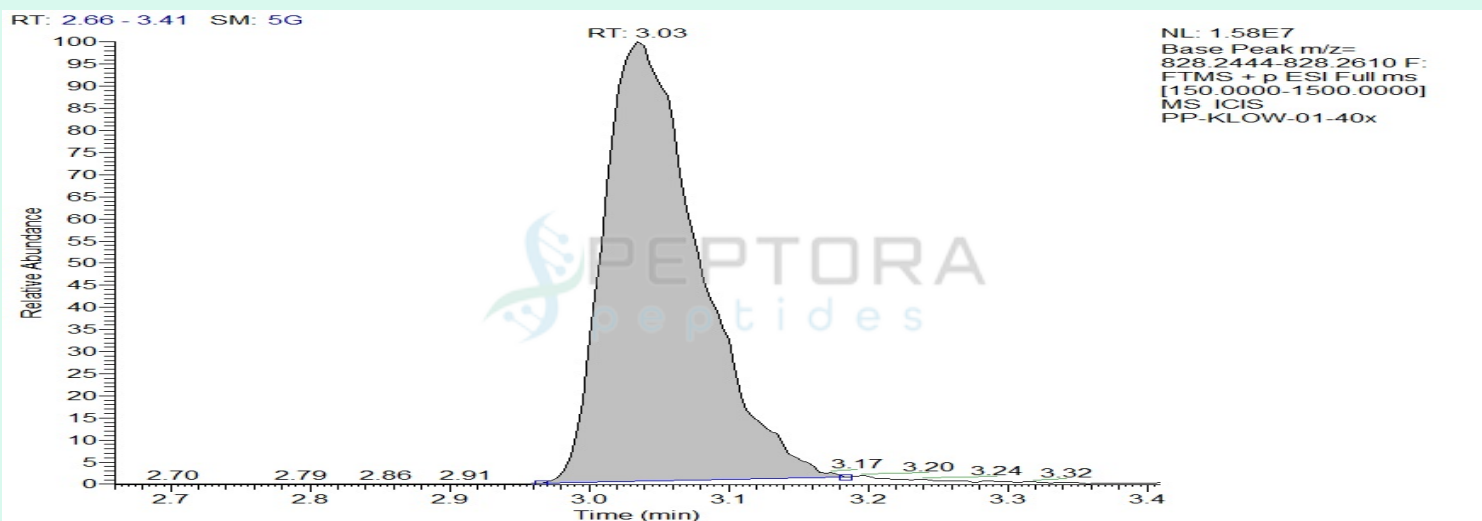
Method: Qualitative and Quantitative chemical analysis by Ultra High Performance Liquid Chromatography with Mass Spectrometry

Pubchem CID: 62707662

TB 500|C38H68N10O14 | CID 62707662 - PubChem

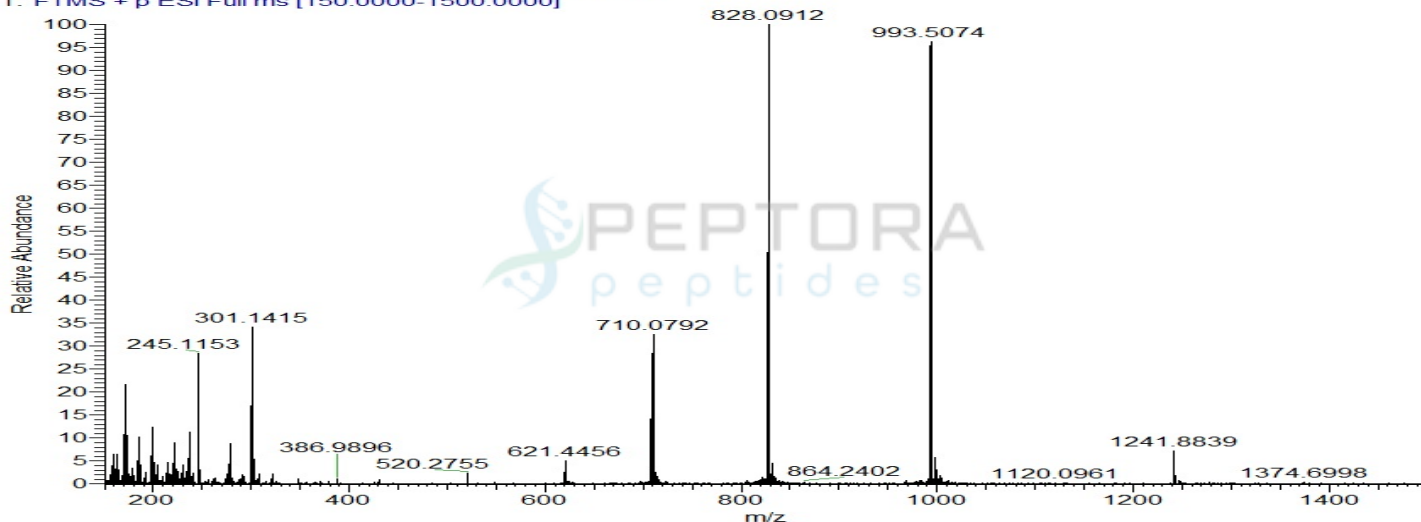
	Specification	Result	
Identity Test:	TB500 (TB4)	TB4	Conforms
Quantity:	10 mg	11.8 mg	Conforms
Purity:	>99%	99.74%	Conforms

LC-MS Chromatogram: Retention Time and Peak Analysis

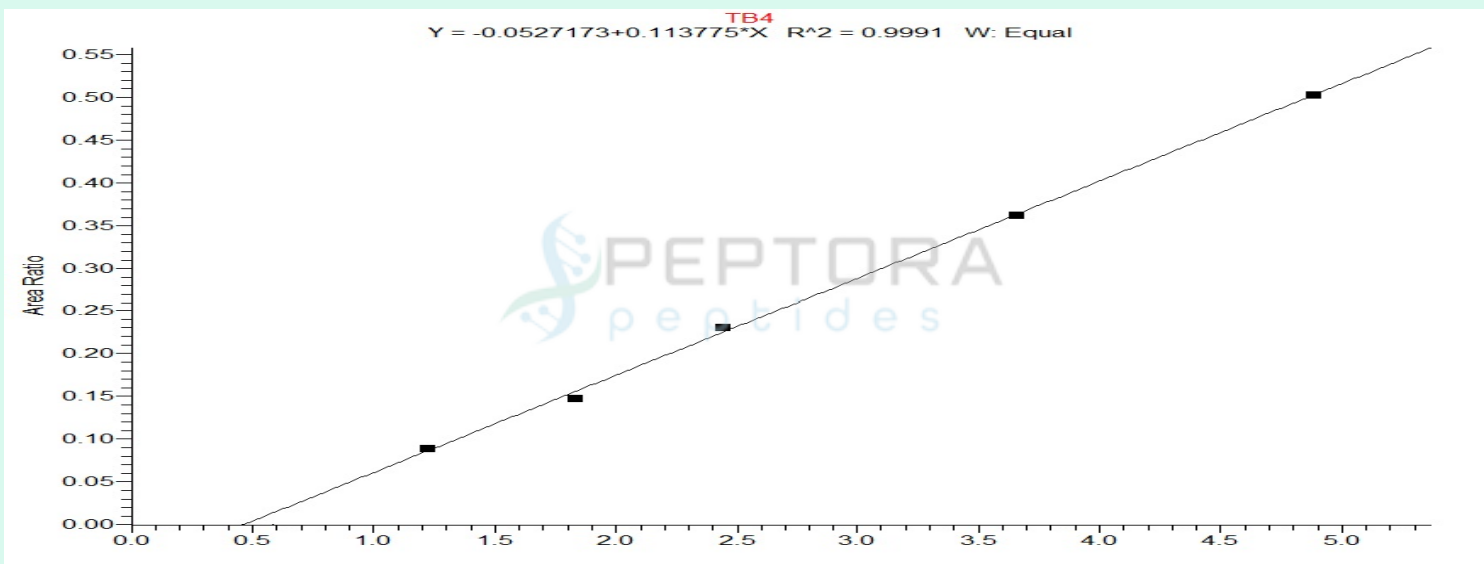


Full Scan Mass Spectrometry Analysis

PP-KLOW-01-40x #696 RT: 3.03 AV: 1 NL: 1.79E7
T: FTMS + p ESI Full ms [150.0000-1500.0000]



Calibration Curve



Analysis Performed by
Dr. Victor Ugur
Analytical Chemist
contact@bioregen.com

COA #12832
Security Key **PEPTORA01**
bioregen.com/verify



Victor Ugur

Client: Peptora, LLC
 help@peptorapeptides.com
 855-811-0112

 Sample received: **03/30/26**
 Analysis conducted: **04/16/26**

Compound:	KLOW	CAS:	49557-75-7
Batch/Lot #:	CHKLW031226	Formula:	C14H24N6O4
Appearance:	Blue lyophilized powder	Mol Wt:	340.38 g/mol

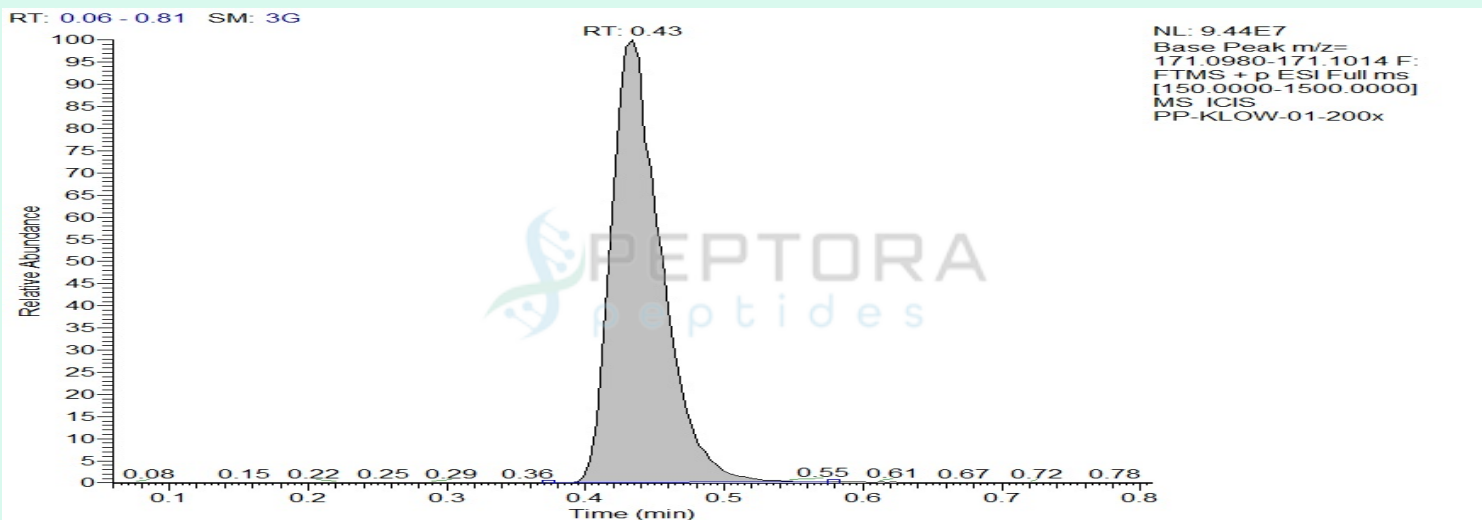
Method: Qualitative and Quantitative chemical analysis by Ultra High Performance Liquid Chromatography with Mass Spectrometry

Pubchem CID: 342538

[GHK-Cu](#) | [C14H24N6O4Cu](#) | [CID 342538](#)

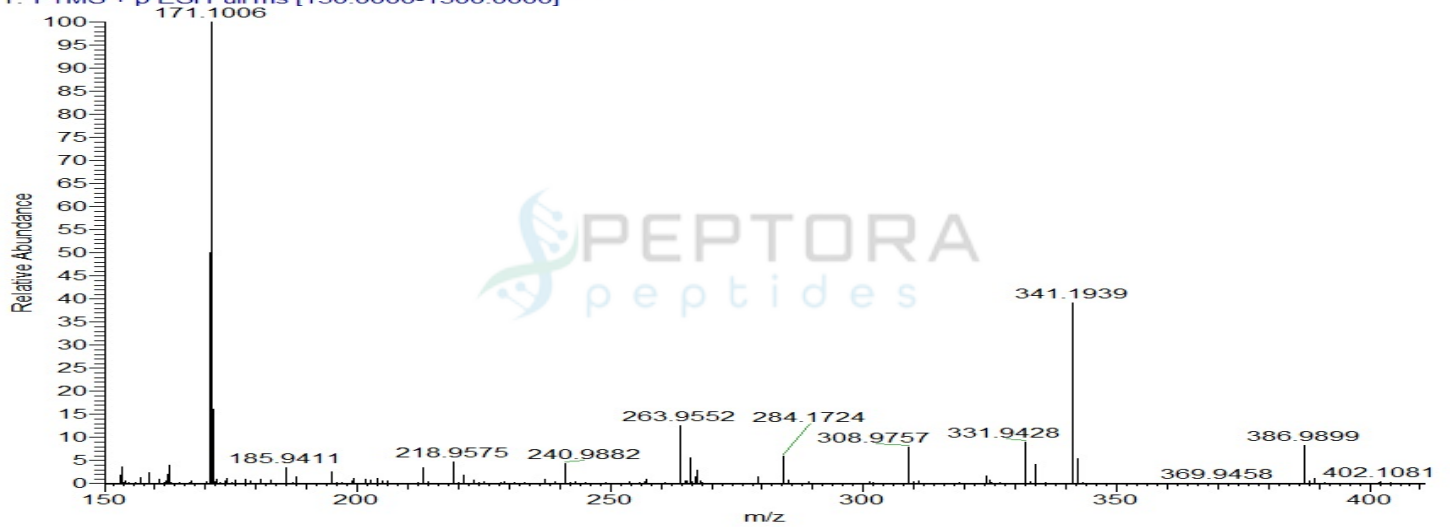
	Specification	Result	
Identity Test:	GHK-Cu	GHK-Cu	Conforms
Quantity:	50 mg	49.9 mg	Conforms
Purity:	>99%	99.53%	Conforms

LC-MS Chromatogram: Retention Time and Peak Analysis

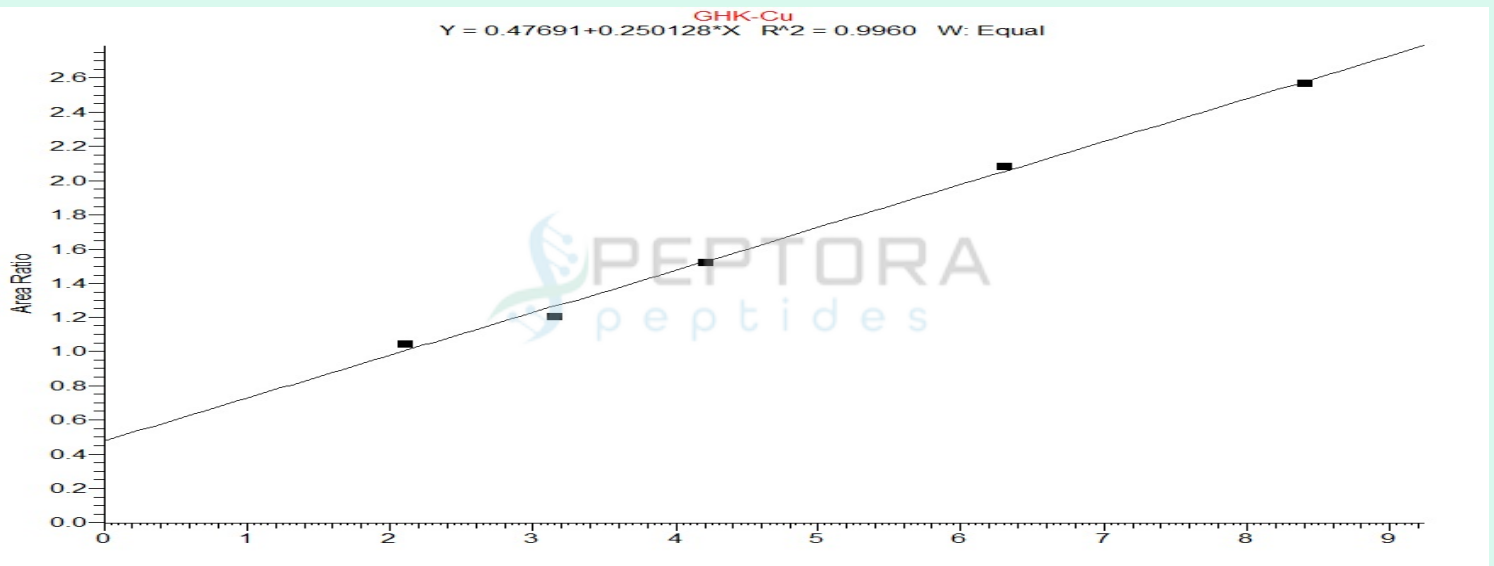


Full Scan Mass Spectrometry Analysis

PP-KLOW-01-200x #100 RT: 0.43 AV: 1 NL: 9.13E7
T: FTMS + p ESI Full ms [150.0000-1500.0000]



Calibration Curve



Analysis Performed by

Dr. Victor Ugur
Analytical Chemist
contact@bioregen.com

COA #12832
Security Key **PEPTORA01**
bioregen.com/verify



Victor Ugur

Client: Peptora, LLC
 help@peptorapeptides.com
 855-811-0112

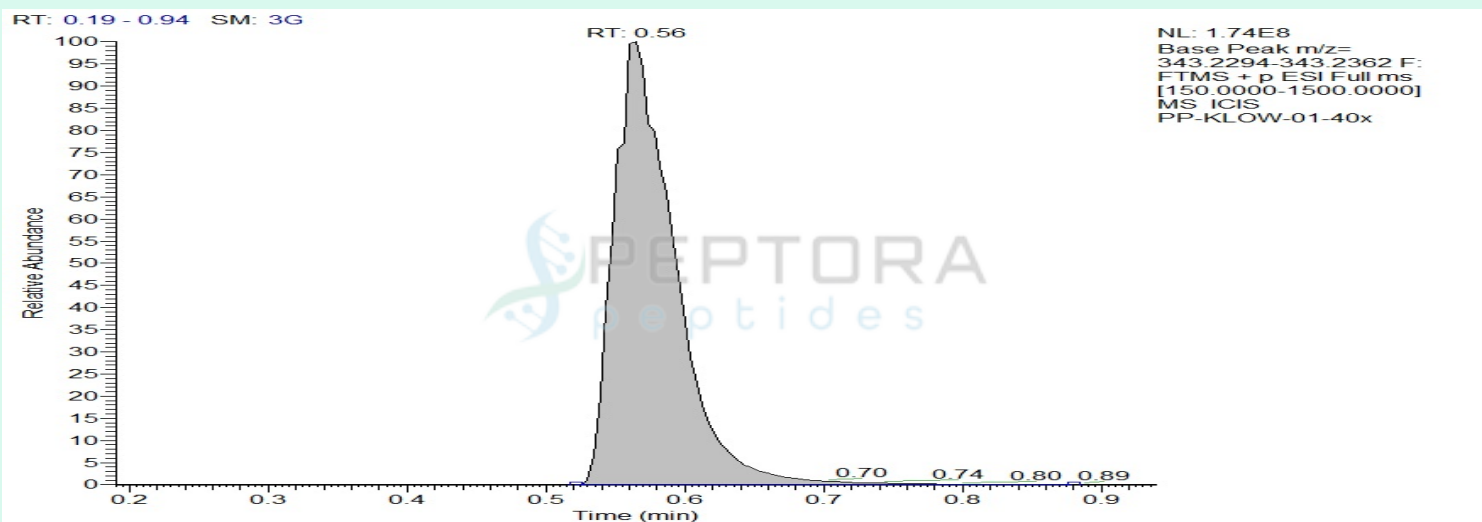
 Sample received: **03/30/26**
 Analysis conducted: **04/16/26**

Compound:	KLOW	CAS:	67727-97-3
Batch/Lot #:	CHKLW031226	Formula:	C16H30N4O4
Appearance:	White lyophilized powder	Mol Wt:	342.43 g/mol

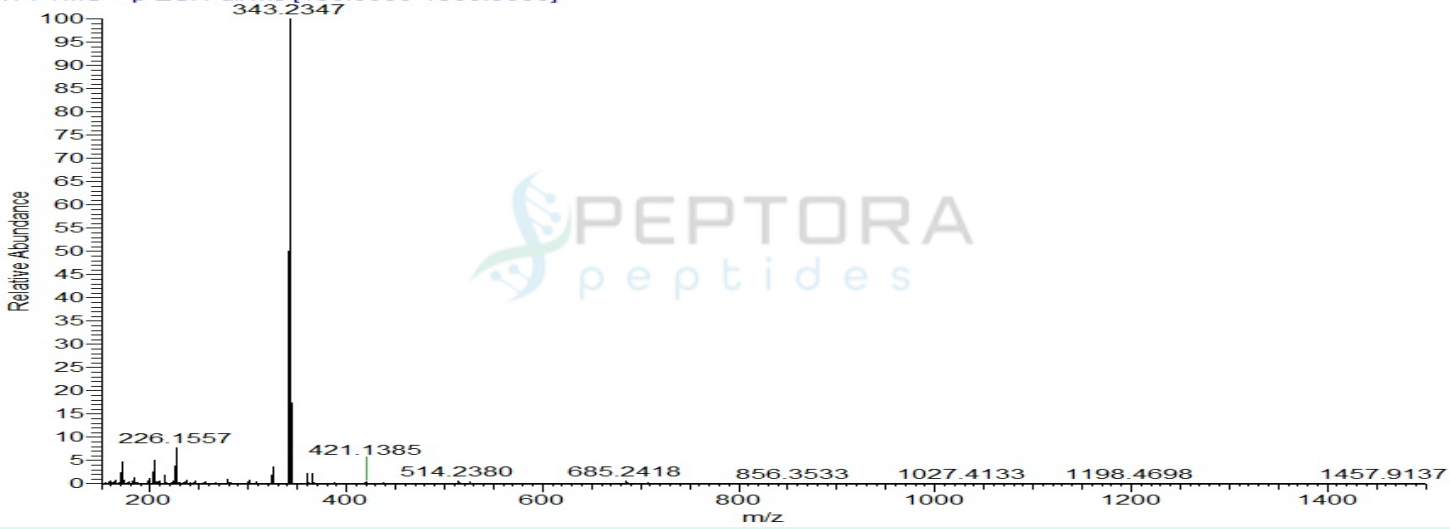
Method: Qualitative and Quantitative chemical analysis by Ultra High Performance Liquid Chromatography with Mass Spectrometry

	Specification	Result	
Identity Test:	KPV	KPV	Conforms
Quantity:	10 mg	10.8 mg	Conforms
Purity:	>99%	99.35%	Conforms

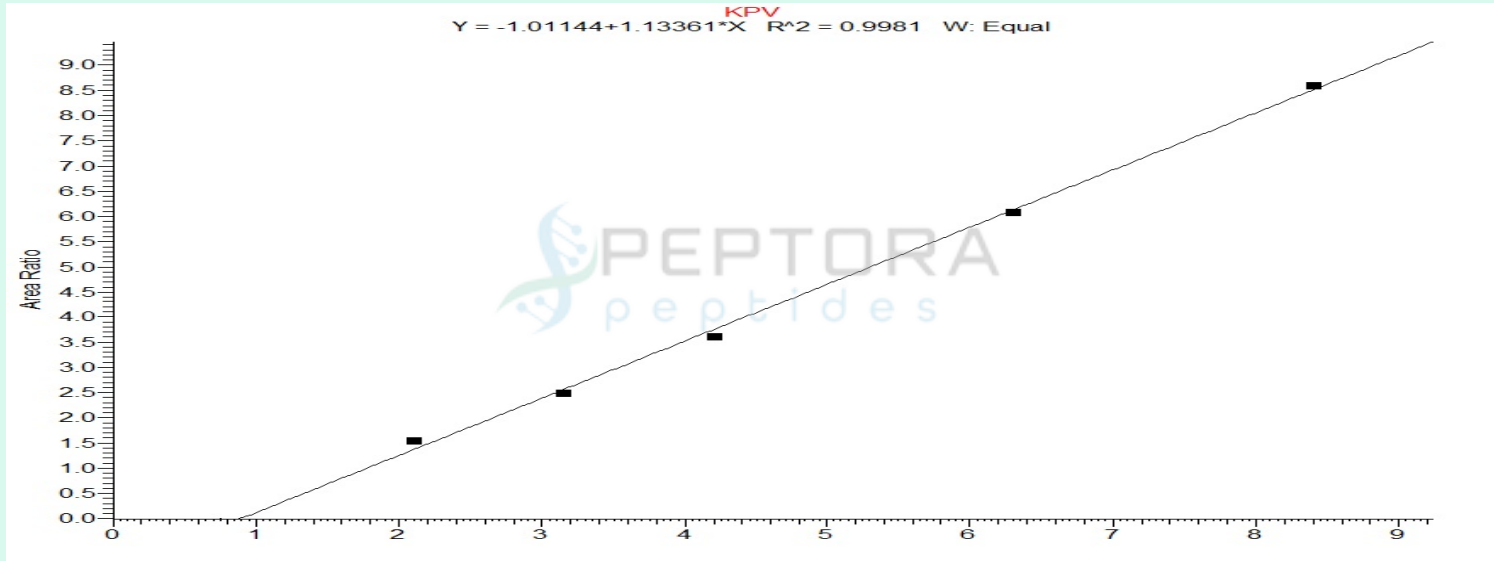
LC-MS Chromatogram: Retention Time and Peak Analysis



Full Scan Mass Spectrometry Analysis



Calibration Curve



Analysis Performed by
Dr. Victor Ugur
Analytical Chemist
contact@bioregen.com

COA #12832
Security Key **PEPTORA01**
bioregen.com/verify



Victor Ugur

Limulus Amebocyte Lysate (LAL) – Report of Analysis

Test Performed	Endosafe - PTS LAL Assay
Test Date	04/15/2026
Analyst	VICTOR
Instrument	Endosafe® nexgen-PTS™ (SN: 25201216)

Sample Information

Company Name	Peptora, LLC
Sample Tested	KLOW
Sample Lot Number	CHBBG031226
Sample Concentration	80mg
Vials/Units Received	1

Reagent Information

Cartridge Type	Endotoxin- LAL (Charles River)
Cartridge Lot #	2602741388
Cartridge Calibration Code	518334799106
Detection Range	0.05 EU/mL – 5.0 EU/mL
Spike Value	1.32 EU/mL
Spike Recovery	119% (Pass)
Test Suitability	Pass

Endotoxin Quantitation Results

Sample ID	Replicates	Measured EU/mL	Specification	Pass/Fail
KLOW	1, 2	<0.05 EU/mL	≤ 0.50 EU/mL	Pass

Interpretation:

Endotoxin level in **KLOW** was measured using chromogenic LAL assay with detection at 405 nm. The result of **<0.05 EU/mL** indicates that the endotoxin content is **below** the acceptable threshold of 0.5 EU/mL. Sample **PASSES** the endotoxin limit test.



Analyst Signature: _____

Date: 04/16/2026

To verify the authenticity of this report, please contact **BioRegen** at contact@bioregen.com or reference the **Report ID** and **Validation Key** provided above.

Alternatively, scan the QR code below to access the official record on our website.

