

**Client: Peptora, LLC**  
 help@peptorapeptides.com  
 855-811-0112

 Sample received: **03/25/26**  
 Analysis conducted: **03/27/26**

Compound:	L-Glutathione	CAS:	70-18-8
Batch/Lot #:	INGTT031826	Formula:	C10H17N3O6S
Appearance:	White lyophilized powder	Mol Wt:	307.33 g/mol

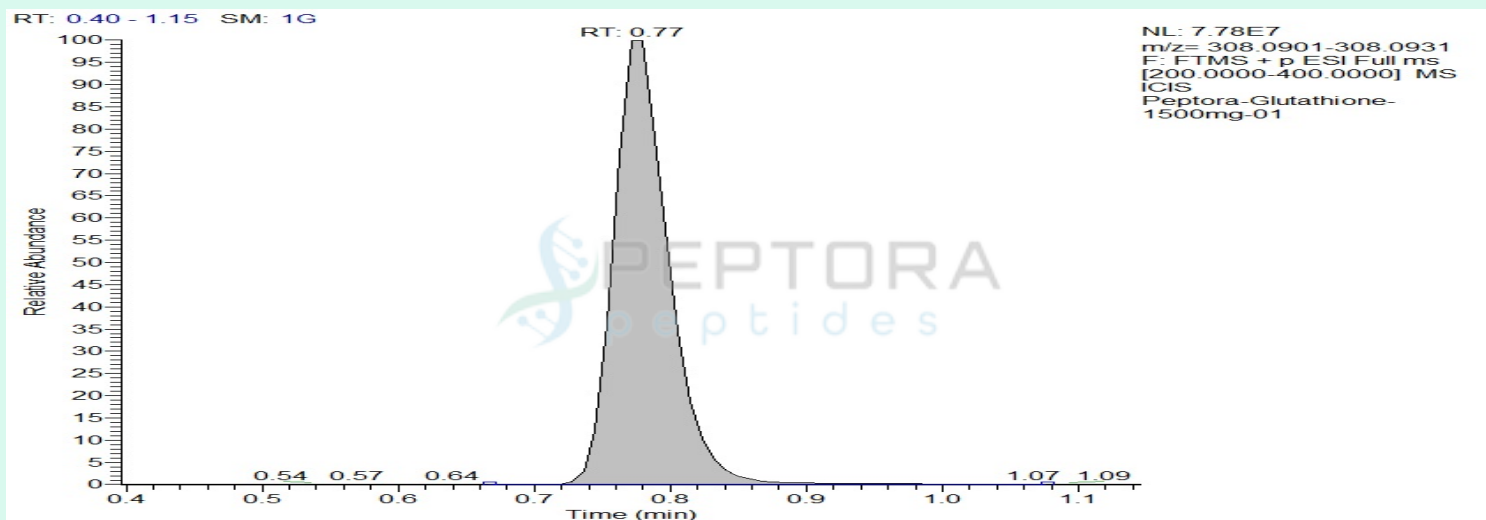
**Method:** Qualitative and Quantitative chemical analysis by Ultra High Performance Liquid Chromatography with Mass Spectrometry

**Pubchem CID:** 124886

Glutathione | C10H17N3O6S | CID 124886

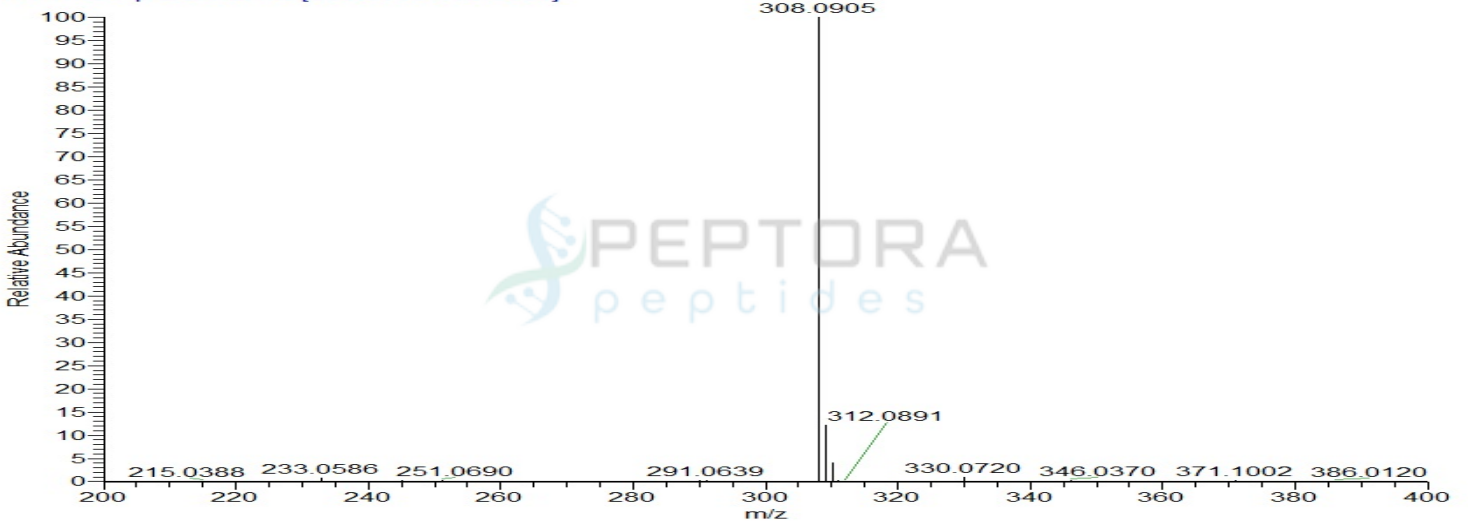
	Specification	Result	
Identity Test:	Glutathione	<b>Glutathione</b>	<b>Conforms</b>
Quantity:	1500 mg	1417 mg	<b>Conforms</b>
Purity:	>99%	<b>99.32%</b>	<b>Conforms</b>

### LC-MS Chromatogram: Retention Time and Peak Analysis

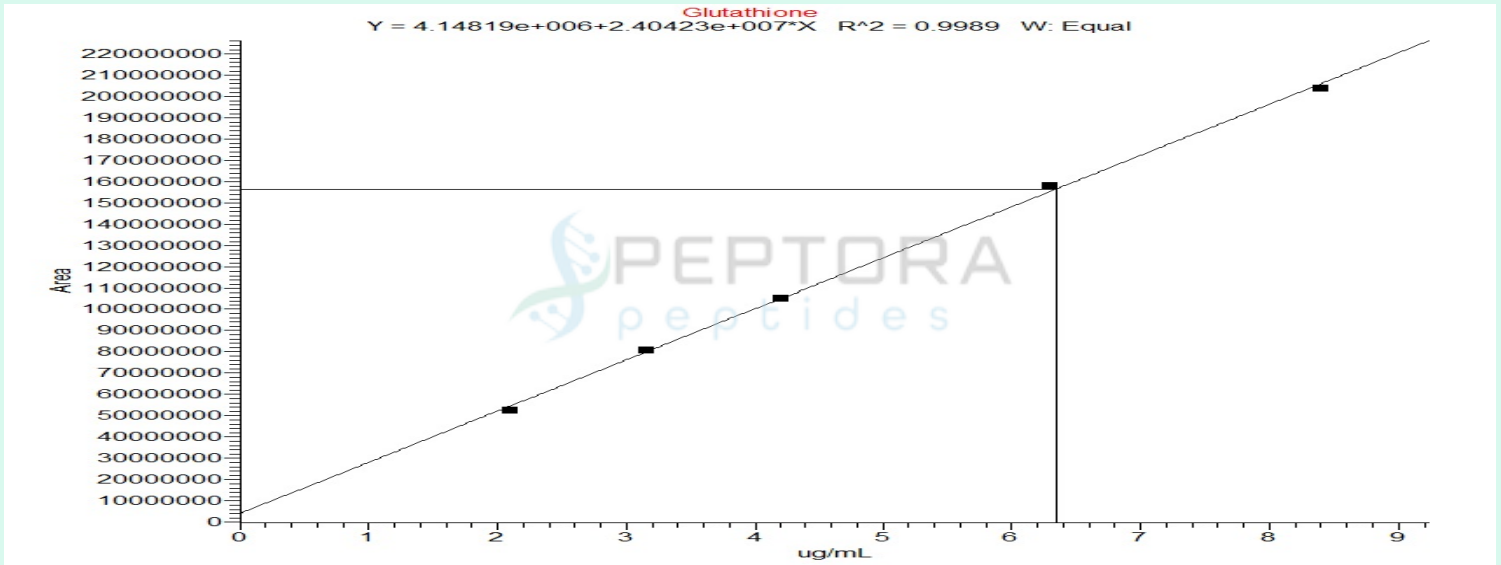


# Full Scan Mass Spectrometry Analysis

Peptora-Glutathione-1500mg-01 #89 RT: 0.77 AV: 1 NL: 7.55E7  
T: FTMS + p ESI Full ms [200.0000-400.0000]



## Calibration Curve



### Analysis Performed by

Dr. Roberto Marin  
Analytical Chemist  
contact@bioregen.com

COA #12615  
Security Key **PEPTORA01**  
bioregen.com/verify



*Roberto Marin*