

**Client: Peptora, LLC**  
 help@peptorapeptides.com  
 855-811-0112

 Sample received: **03/23/26**  
 Analysis conducted: **04/13/26**

Compound:	GHK-Cu	CAS:	89030-95-5
Batch/Lot #:	INCU50031826	Formula:	C14H23CuN6O4
Appearance:	Blue lyophilized powder	Mol Wt:	340.384 g/mol

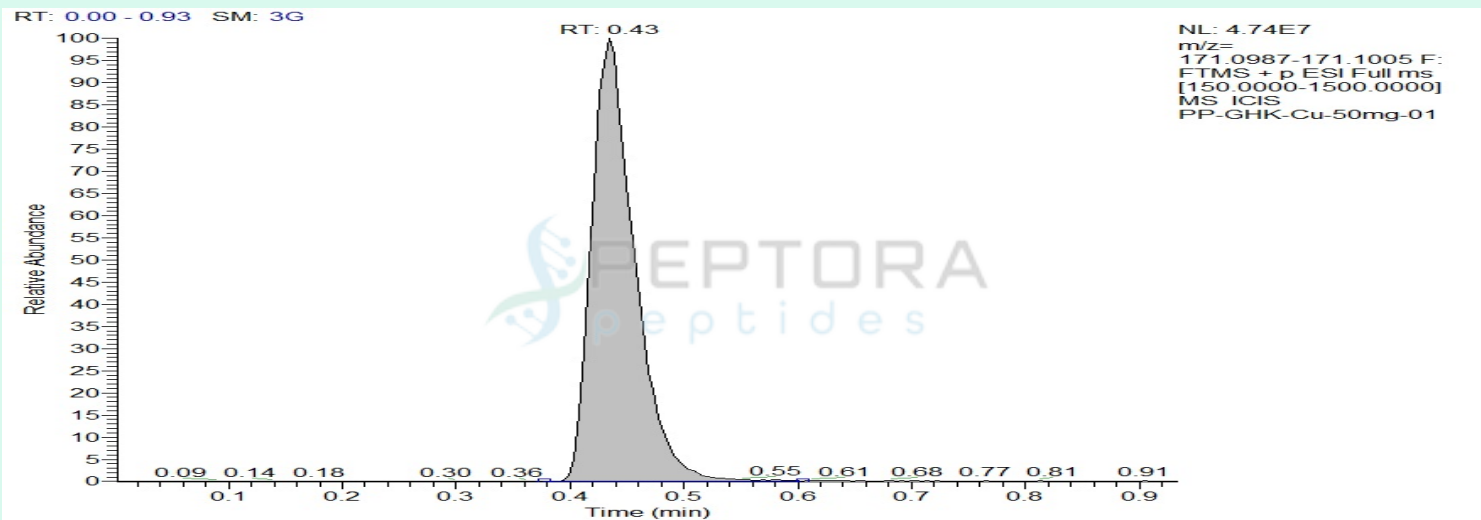
**Method:** Qualitative and Quantitative chemical analysis by Ultra High Performance Liquid Chromatography with Mass Spectrometry

**Pubchem CID:** 378611

[GHK-Cu | C14H23CuN6O4 | 378611](#)

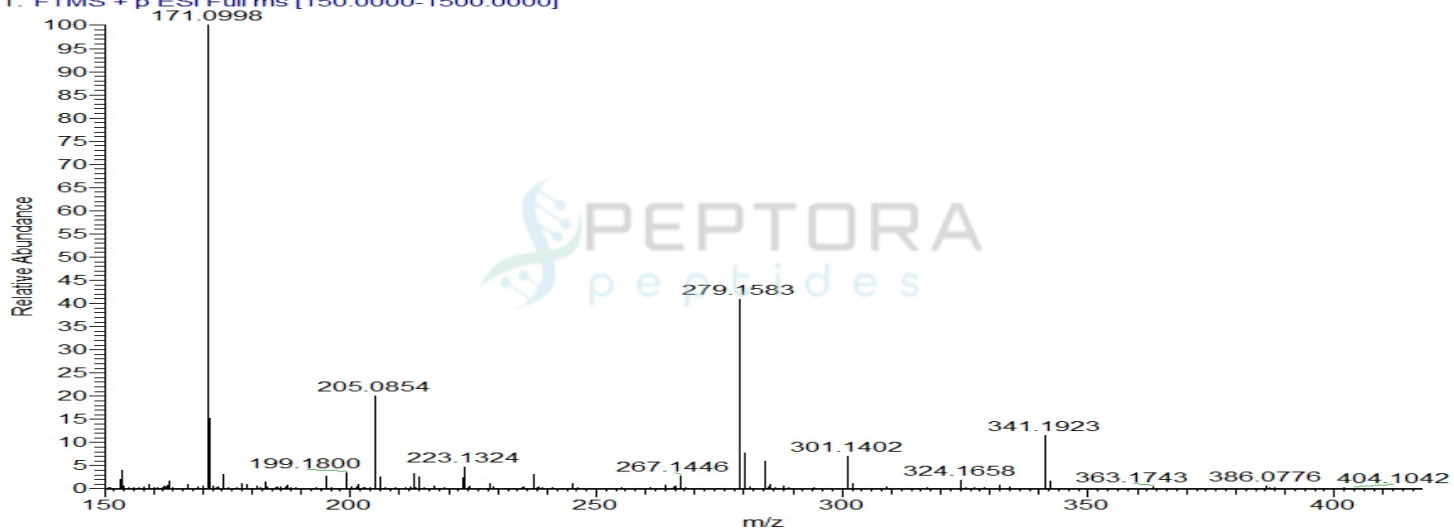
	Specification	Result	
Identity Test:	GHK-Cu	<b>GHK-Cu</b>	<b>Conforms</b>
Quantity:	50 mg	52.57 mg	<b>Conforms</b>
Purity:	>99%	<b>99.55%</b>	<b>Conforms</b>

### LC-MS Chromatogram and Retention Time Analysis

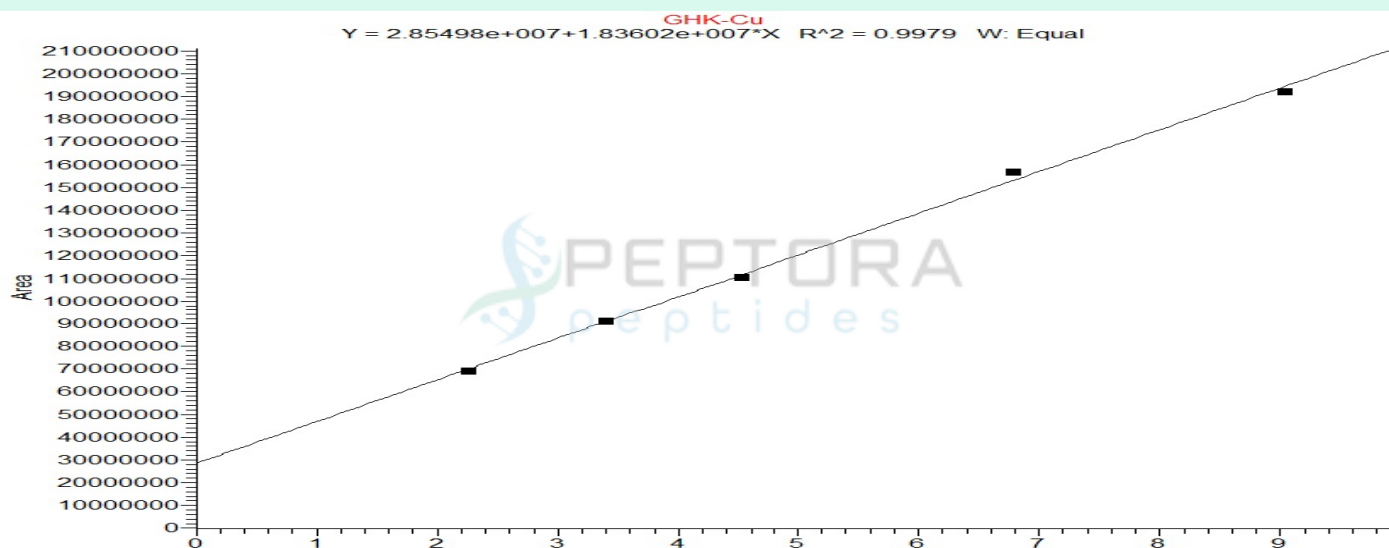


# Full Scan Mass Spectrometry Analysis

PP-GHK-Cu-50mg-01 #100 RT: 0.43 AV: 1 NL: 4.76E7  
T: FTMS + p ESI Full ms [150.0000-1500.0000]



## Calibration Curve



### Analysis Performed by

Dr. Victor Ugur  
Analytical Chemist  
contact@bioregen.com

COA #12797  
Security Key **PEPTORA01**  
bioregen.com/verify



*Victor Ugur*

## Limulus Amebocyte Lysate (LAL) – Report of Analysis

Test Performed	Endosafe - PTS LAL Assay
Test Date	04/14/2026
Analyst	VICTOR
Instrument	Endosafe® nexgen-PTS™ (SN: 25201216)

### Sample Information

Company Name	Peptora, LLC
Sample Tested	GHK-Cu
Sample Lot Number	INCU50031826
Sample Concentration	50mg
Vials/Units Received	1

### Reagent Information

Cartridge Type	Endotoxin- LAL (Charles River)
Cartridge Lot #	2602741388
Cartridge Calibration Code	518334799106
Detection Range	0.05 EU/mL – 5.0 EU/mL
Spike Value	0.786 EU/mL
Spike Recovery	71% (Pass)
Test Suitability	Pass

### Endotoxin Quantitation Results

Sample ID	Replicates	Measured EU/mL	Specification	Pass/Fail
GHK-Cu	1, 2	<0.05 EU/mL	≤ 0.50 EU/mL	Pass

#### Interpretation:

Endotoxin level in **GHK-Cu** was measured using chromogenic LAL assay with detection at 405 nm. The result of **<0.05 EU/mL** indicates that the endotoxin content is **below** the acceptable threshold of 0.5 EU/mL. Sample **PASSES** the endotoxin limit test.



Analyst Signature: \_\_\_\_\_

 Date: 04/15/2026

To verify the authenticity of this report, please contact **BioRegen** at [contact@bioregen.com](mailto:contact@bioregen.com) or reference the **Report ID** and **Validation Key** provided above.

Alternatively, **scan the QR code** below to access the official record on our website.

