

Client: Peptora, LLC
 help@peptorapeptides.com
 855-811-0112

 Sample received: **04/01/26**
 Analysis conducted: **04/01/26**

Compound:	TB 500	CAS:	885340-08-9
Batch/Lot #:	CHTB10031826	Formula:	C38H68N10O14
Appearance:	White lyophilized powder	Mol Wt:	889 g/mol

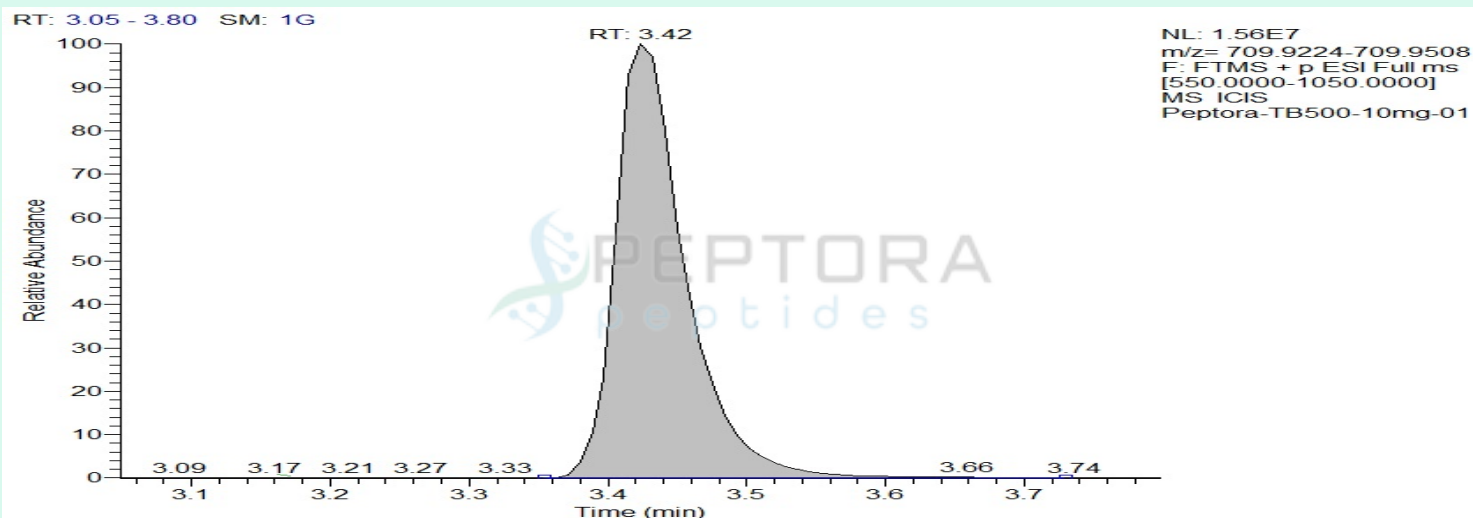
Method: Qualitative and Quantitative chemical analysis by Ultra High Performance Liquid Chromatography with Mass Spectrometry

Pubchem CID: 62707662

TB 500 | C38H68N10O14 | CID 62707662

	Specification	Result	
Identity Test:	TB-500	Thymosin Beta 4	Conforms
Quantity:	10 mg	11.23 mg	Conforms
Purity:	>99%	99.72%	Conforms

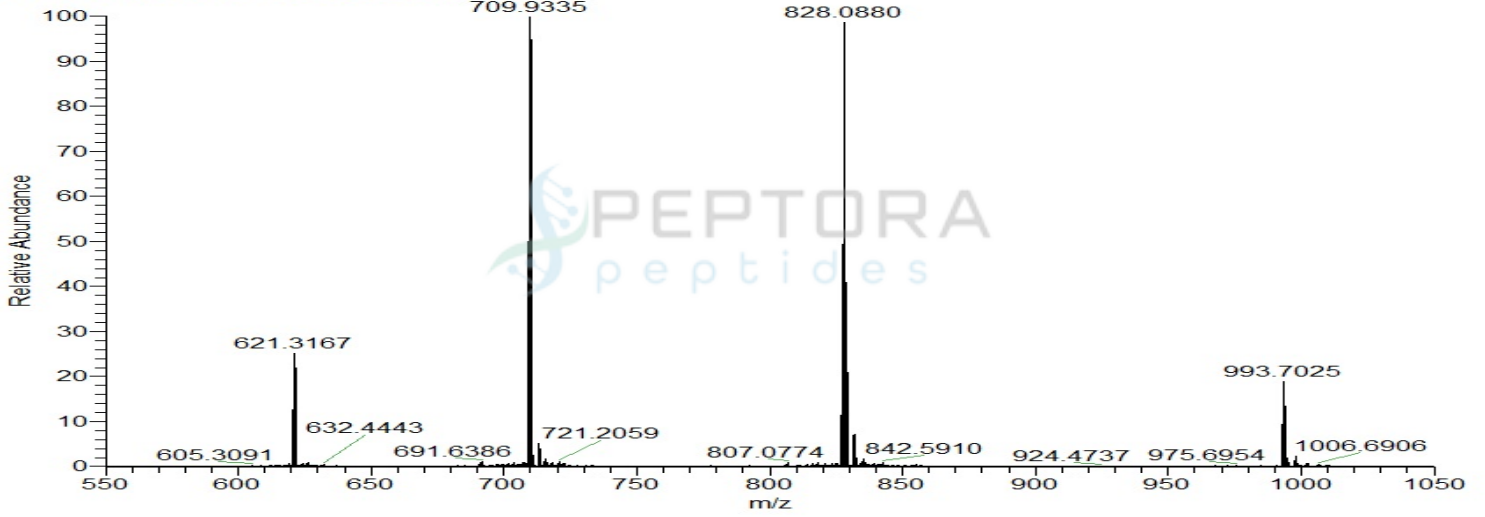
LC-MS Chromatogram: Retention Time and Peak Analysis



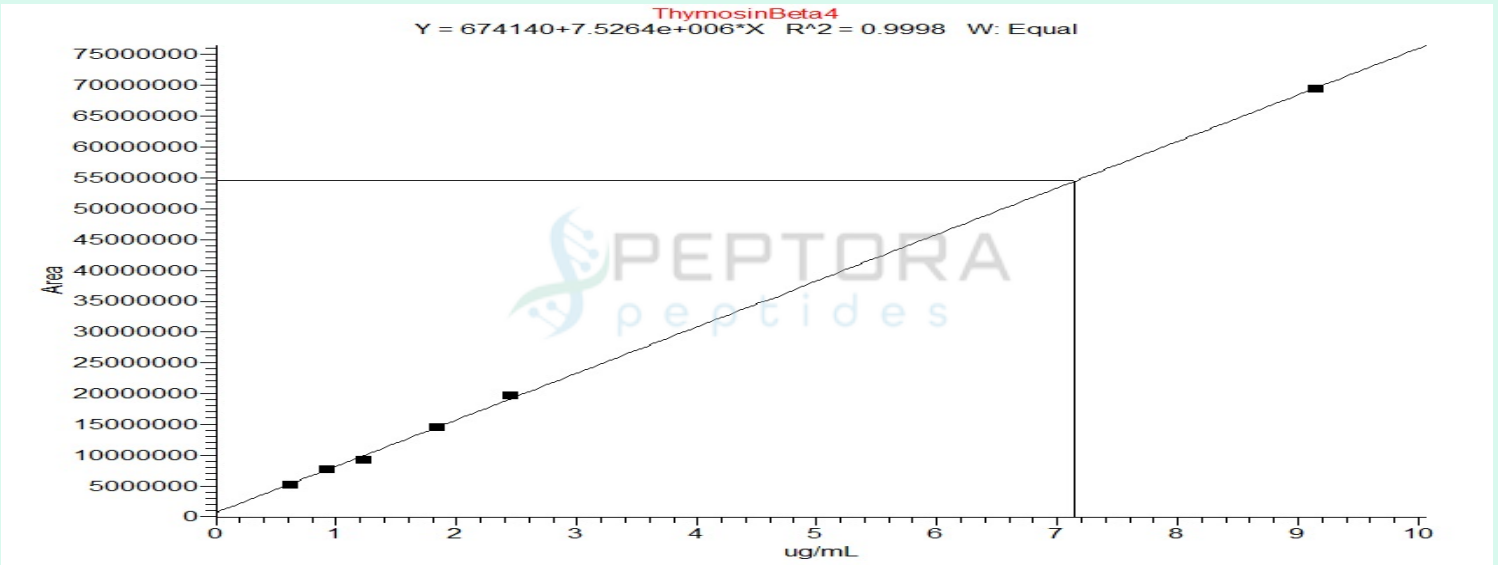
Full Scan Mass Spectrometry Analysis

Peptora-TB500-10mg-01 #393 RT: 3.42 AV: 1 NL: 1.55E7

T: FTMS + p ESI Full ms [550.0000-1050.0000]



Calibration Curve



Analysis Performed by

Dr. Roberto Marin
Analytical Chemist
contact@bioregen.com

COA #12678
Security Key **PEPTORA01**
bioregen.com/verify

Roberto Marin



Limulus Amebocyte Lysate (LAL) – Report of Analysis

Test Performed	Endosafe - PTS LAL Assay
Test Date	04/02/2026
Analyst	VICTOR
Instrument	Endosafe® nexgen-PTS™ (SN: 25201216)

Sample Information

Company Name	Peptora, LLC
Sample Tested	TB-500
Sample Lot Number	CHTB10031826
Sample Concentration	10mg
Vials/Units Received	1

Reagent Information

Cartridge Type	Endotoxin- LAL (Charles River)
Cartridge Lot #	2601241225
Cartridge Calibration Code	511840156587
Detection Range	0.05 EU/mL – 5.0 EU/mL
Spike Value	1.22 EU/mL
Spike Recovery	143% (Pass)
Test Suitability	Pass

Endotoxin Quantitation Results

Sample ID	Replicates	Measured EU/mL	Specification	Pass/Fail
TB-500	1, 2	<0.06 EU/mL	≤ 0.50 EU/mL	Pass

Interpretation:

Endotoxin level in **TB-500** was measured using chromogenic LAL assay with detection at 405 nm. The result of **<0.06 EU/mL** indicates that the endotoxin content is **below** the acceptable threshold of 0.5 EU/mL. Sample **PASSES** the endotoxin limit test.



Analyst Signature: _____

Date: 04/03/2026

To verify the authenticity of this report, please contact **BioRegen** at contact@bioregen.com or reference the **Report ID** and **Validation Key** provided above.

Alternatively, scan the QR code below to access the official record on our website.

