

**Client: Peptora, LLC**  
 help@peptorapeptides.com  
 855-811-0112

 Sample received: **03/24/26**  
 Analysis conducted: **03/30/26**

Compound:	BPC-157	CAS:	137525-51-0
Batch/Lot #:	CHBC10031826	Formula:	C62H98N16O22
Appearance:	White lyophilized powder	Mol Wt:	1419.556 g/mol

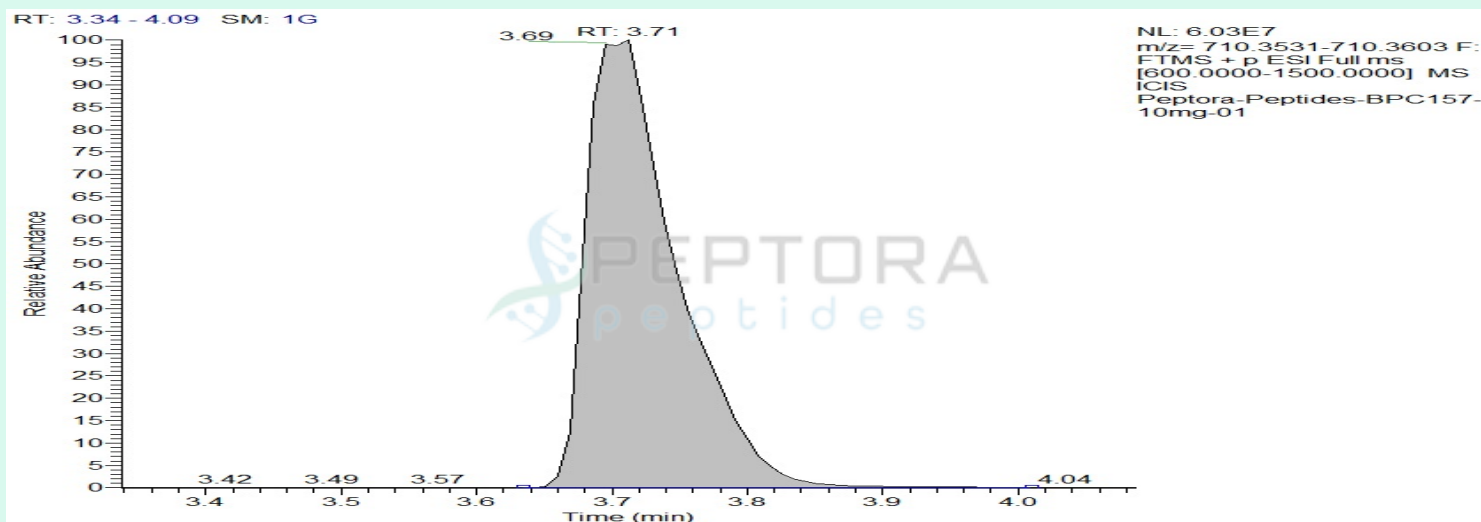
**Method:** Qualitative and Quantitative chemical analysis by Ultra High Performance Liquid Chromatography with Mass Spectrometry

**Pubchem CID:** 9941957

[BPC 157](#) | [C62H98N16O22](#) | [CID 9941957](#) - PubChem

	Specification	Result	
Identity Test:	BPC 157	<b>BPC 157</b>	<b>Conforms</b>
Quantity:	10 mg	10.19 mg	<b>Conforms</b>
Purity:	>99%	<b>99.76%</b>	<b>Conforms</b>

### LC-MS Chromatogram: Retention Time and Peak Analysis

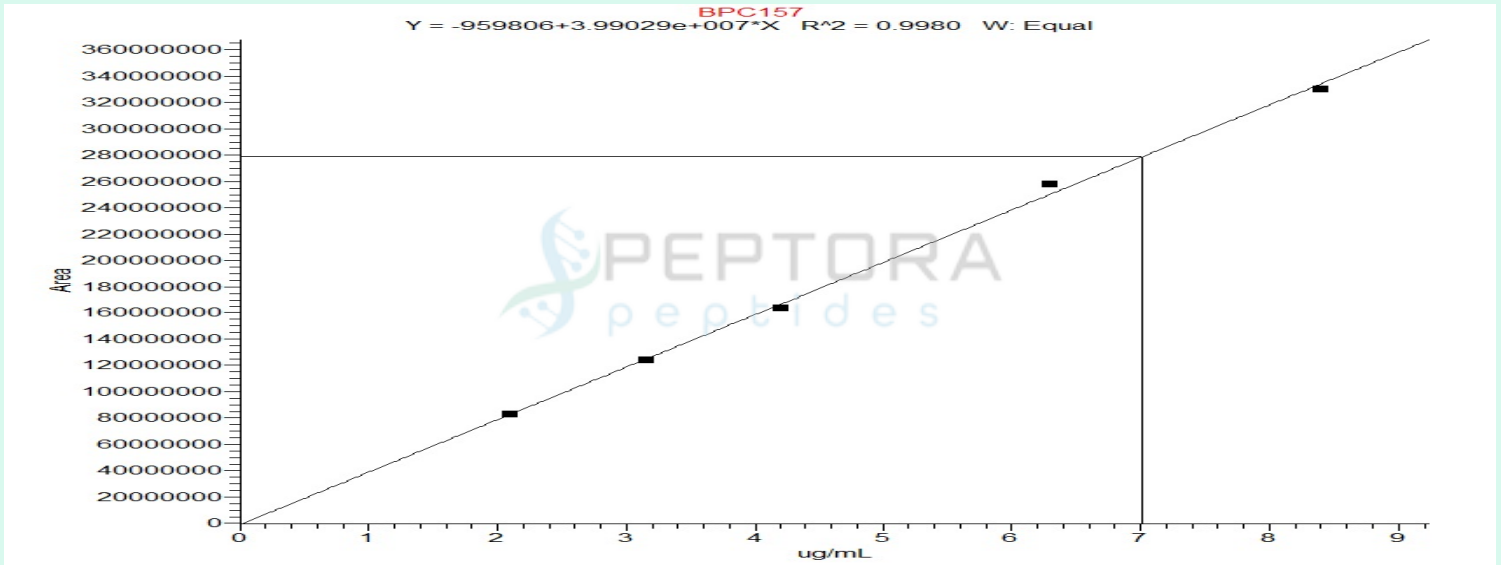


# Full Scan Mass Spectrometry Analysis

Peptora-Peptides-BPC157-10mg-01 #426 RT: 3.71 AV: 1 NL: 5.82E7  
T: FTMS + p ESI Full ms [600.0000-1500.0000]



## Calibration Curve



### Analysis Performed by

Dr. Roberto Marin  
Analytical Chemist  
contact@bioregen.com

COA #12654  
Security Key **PEPTORA01**  
bioregen.com/verify



*Roberto Marin*

## Limulus Amebocyte Lysate (LAL) – Report of Analysis

Test Performed	Endosafe - PTS LAL Assay
Test Date	04/02/2026
Analyst	VICTOR
Instrument	Endosafe® nexgen-PTS™ (SN: 25201216)

### Sample Information

Company Name	Peptora, LLC
Sample Tested	BPC-157
Sample Lot Number	CHBC10031826
Sample Concentration	10mg
Vials/Units Received	1

### Reagent Information

Cartridge Type	Endotoxin- LAL (Charles River)
Cartridge Lot #	2601241225
Cartridge Calibration Code	511840156587
Detection Range	0.05 EU/mL – 5.0 EU/mL
Spike Value	1.03 EU/mL
Spike Recovery	121% (Pass)
Test Suitability	Pass

### Endotoxin Quantitation Results

Sample ID	Replicates	Measured EU/mL	Specification	Pass/Fail
BPC-157	1, 2	<0.06 EU/mL	≤ 0.50 EU/mL	Pass

#### Interpretation:

Endotoxin level in **BPC-157** was measured using chromogenic LAL assay with detection at 405 nm. The result of **<0.06 EU/mL** indicates that the endotoxin content is **below** the acceptable threshold of 0.5 EU/mL. Sample **PASSES** the endotoxin limit test.



Analyst Signature: \_\_\_\_\_

Date: 04/03/2026

To verify the authenticity of this report, please contact **BioRegen** at [contact@bioregen.com](mailto:contact@bioregen.com) or reference the **Report ID** and **Validation Key** provided above.

Alternatively, scan the QR code below to access the official record on our website.

