

Client: Peptora, LLC
 help@peptorapeptides.com
 855-811-0112

 Sample received: **04/01/26**
 Analysis conducted: **04/01/26**

Compound:	Tirzepatide	CAS:	2023788-19-2
Batch/Lot #:	BDT60031226	Formula:	C225H348N48O68
Appearance:	White lyophilized powder	Mol Wt:	4813 g/mol

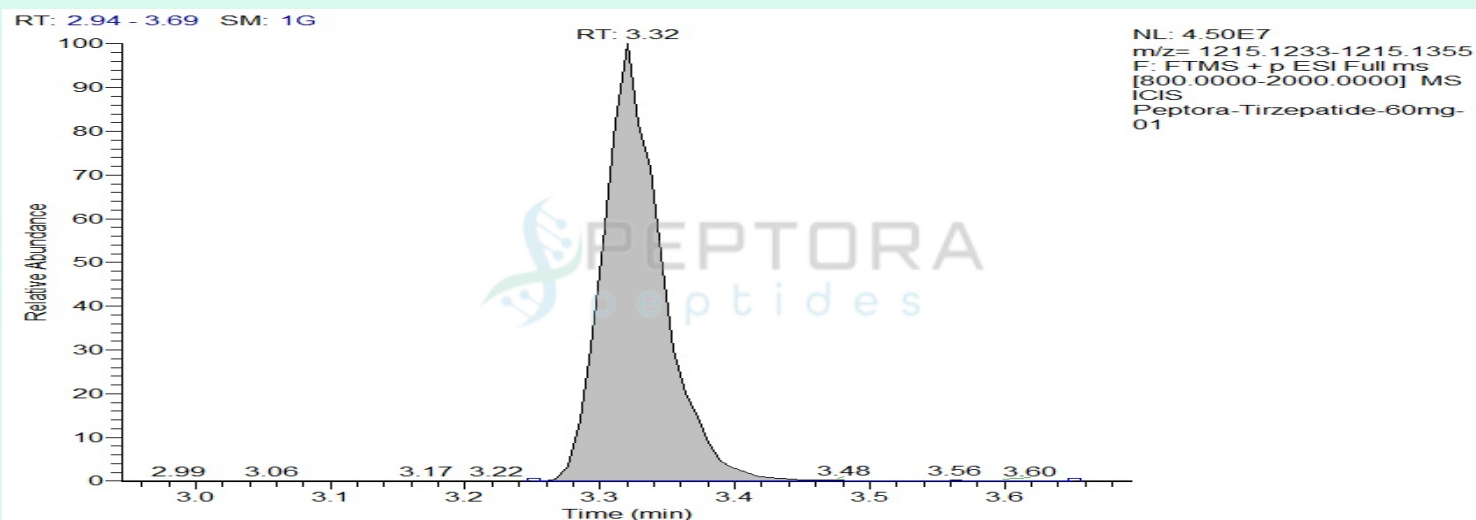
Method: Qualitative and Quantitative chemical analysis by Ultra High Performance Liquid Chromatography with Mass Spectrometry

Pubchem CID: 166567236

[Tirzepatide | C225H348N48O68 | CID 166567236 - PubChem](#)

	Specification	Result	
Identity Test:	Tirzepatide	Tirzepatide	Conforms
Quantity:	60 mg	65.9 mg	Conforms
Purity:	>99%	99.21%	Conforms

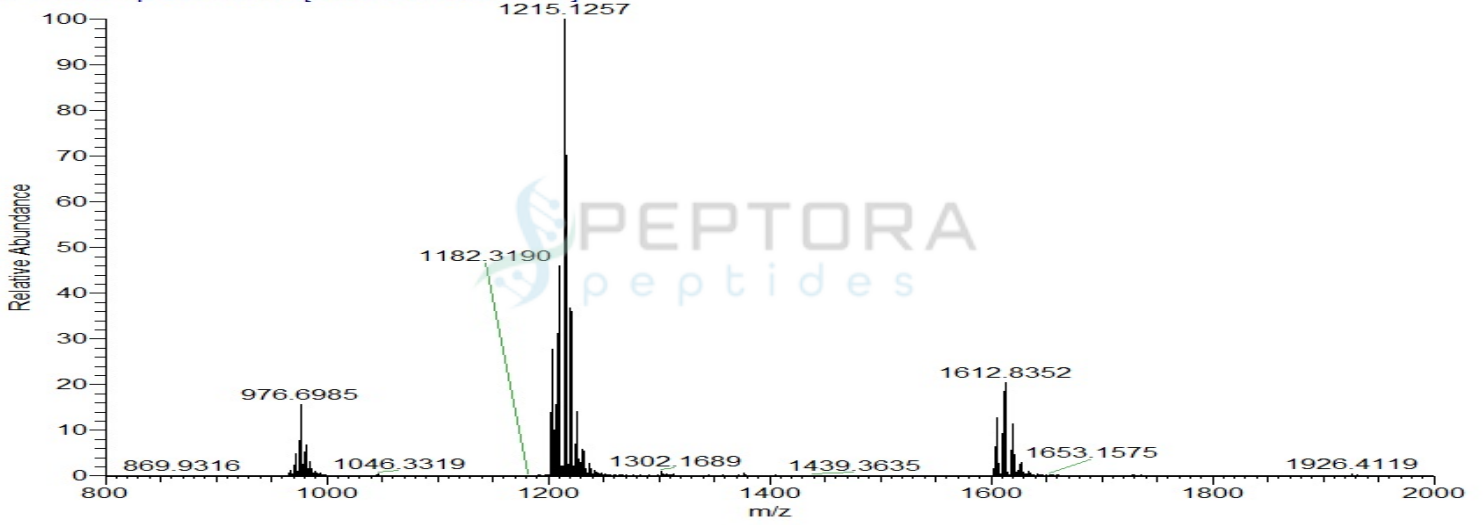
LC-MS Chromatogram: Retention Time and Peak Analysis



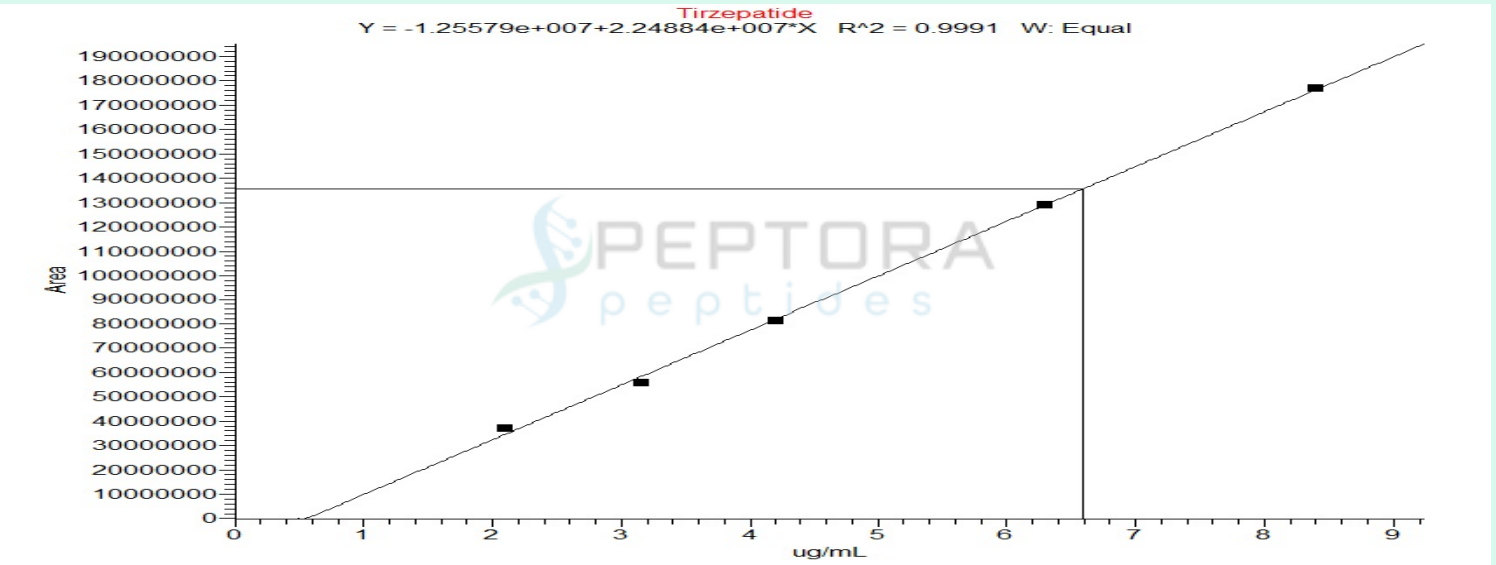
Full Scan Mass Spectrometry Analysis

Peptora-Tirzepatide-60mg-01 #381 RT: 3.32 AV: 1 NL: 4.48E7

T: FTMS + p ESI Full ms [800.0000-2000.0000]



Calibration Curve



Analysis Performed by

Dr. Roberto Marin
Analytical Chemist
contact@bioregen.com

COA #12683
Security Key **PEPTORA01**
bioregen.com/verify

Roberto Marin

